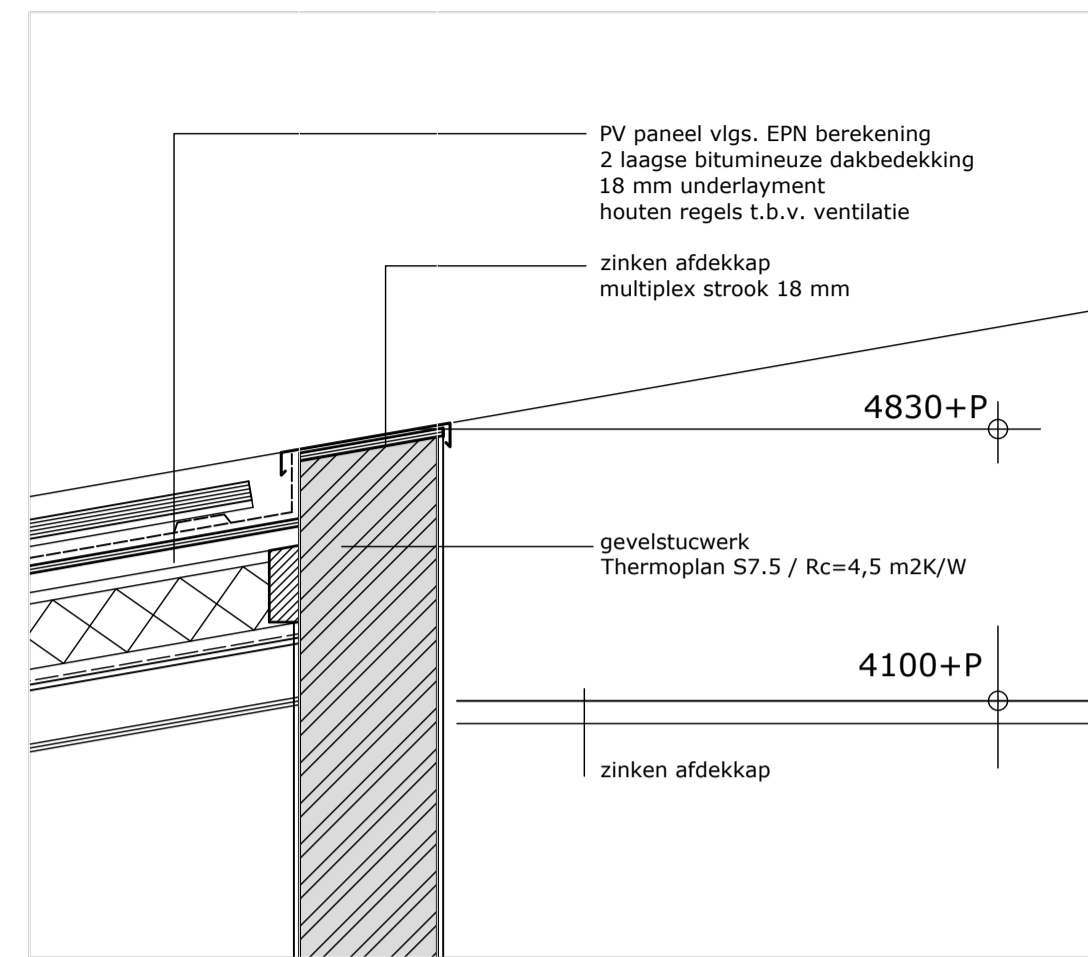
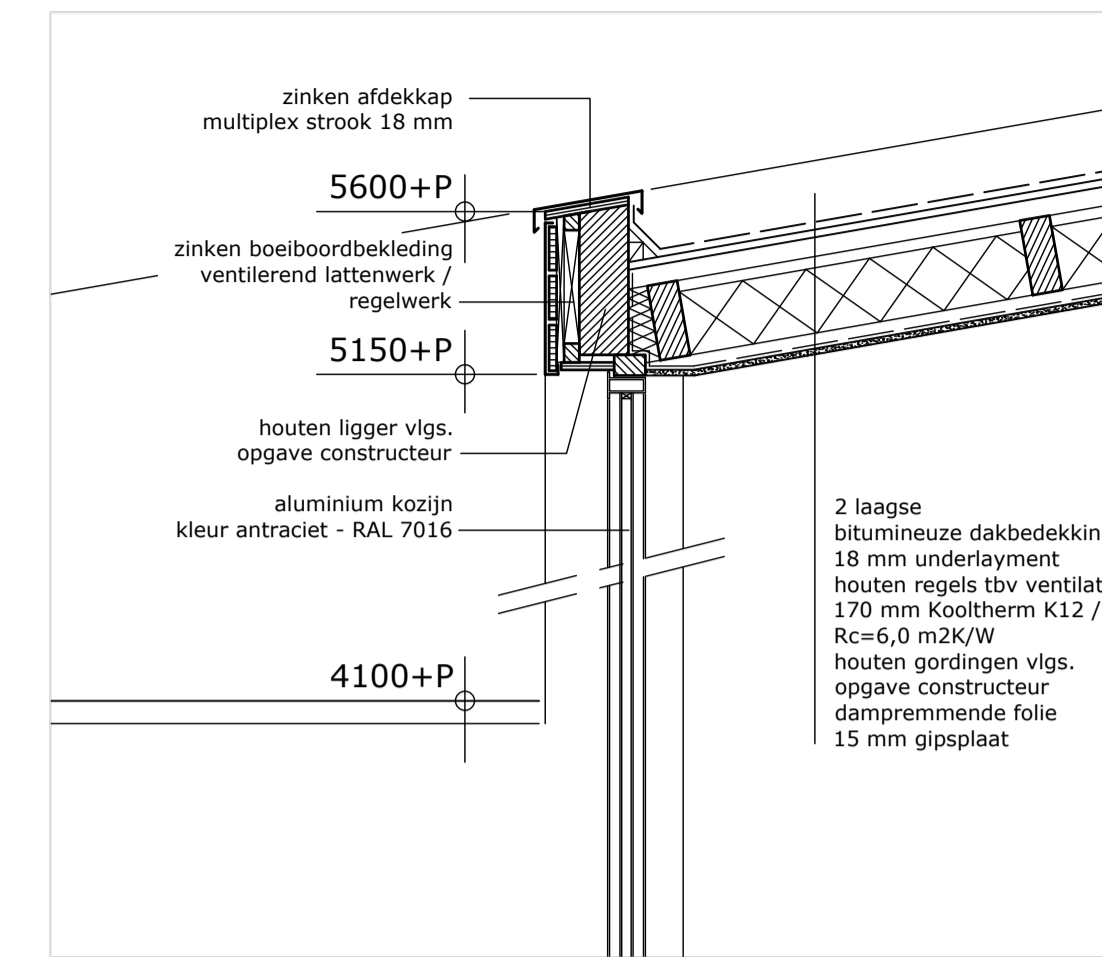


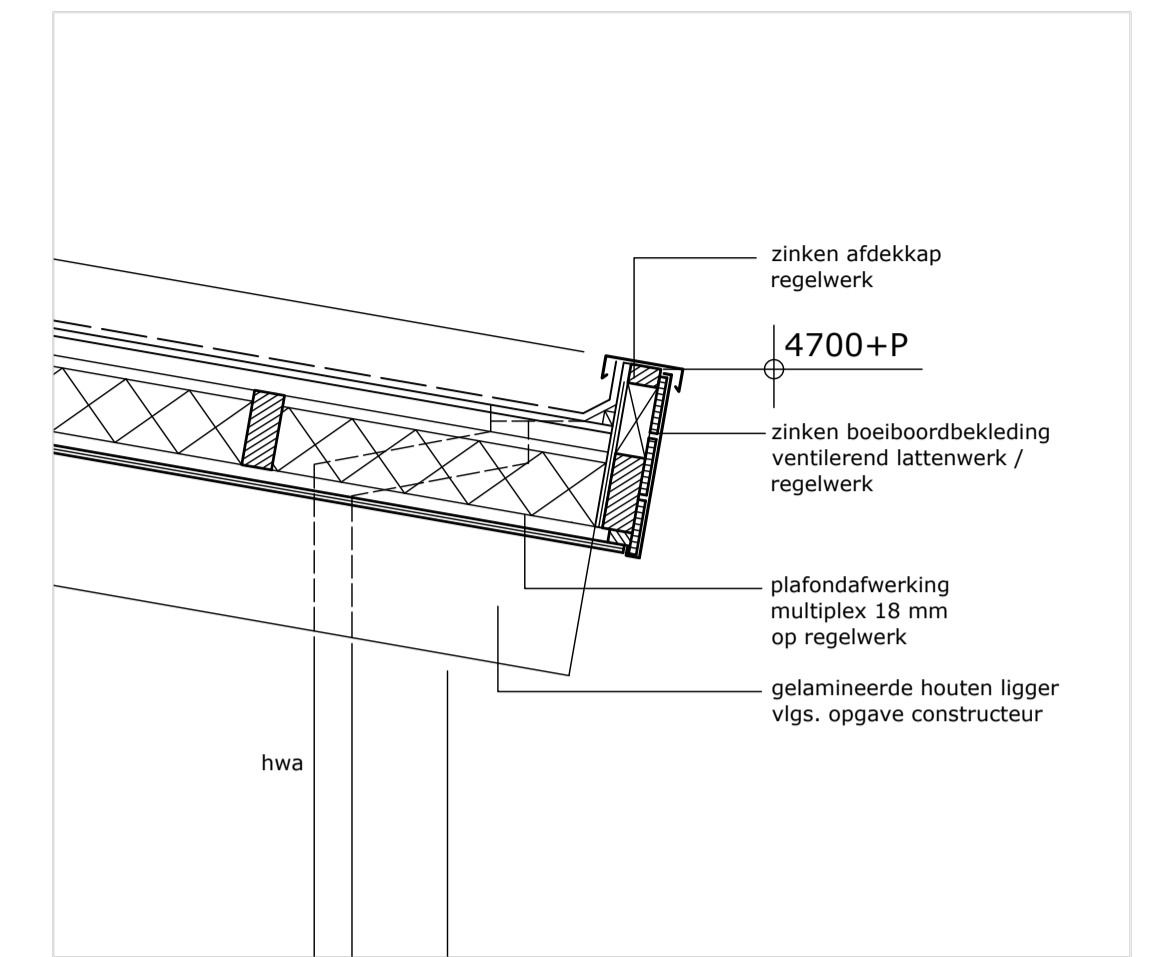
## DAKCONSTRUCTIE



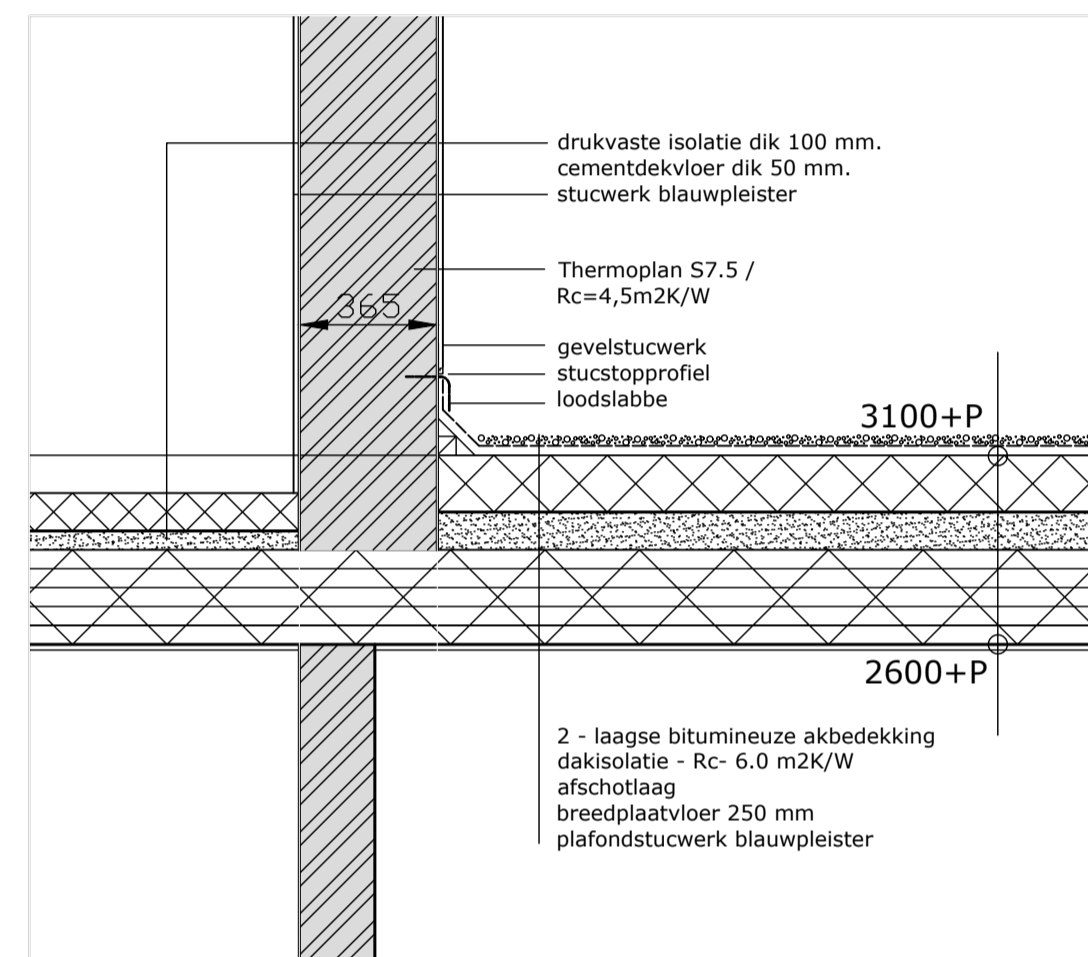
DETAIL 01



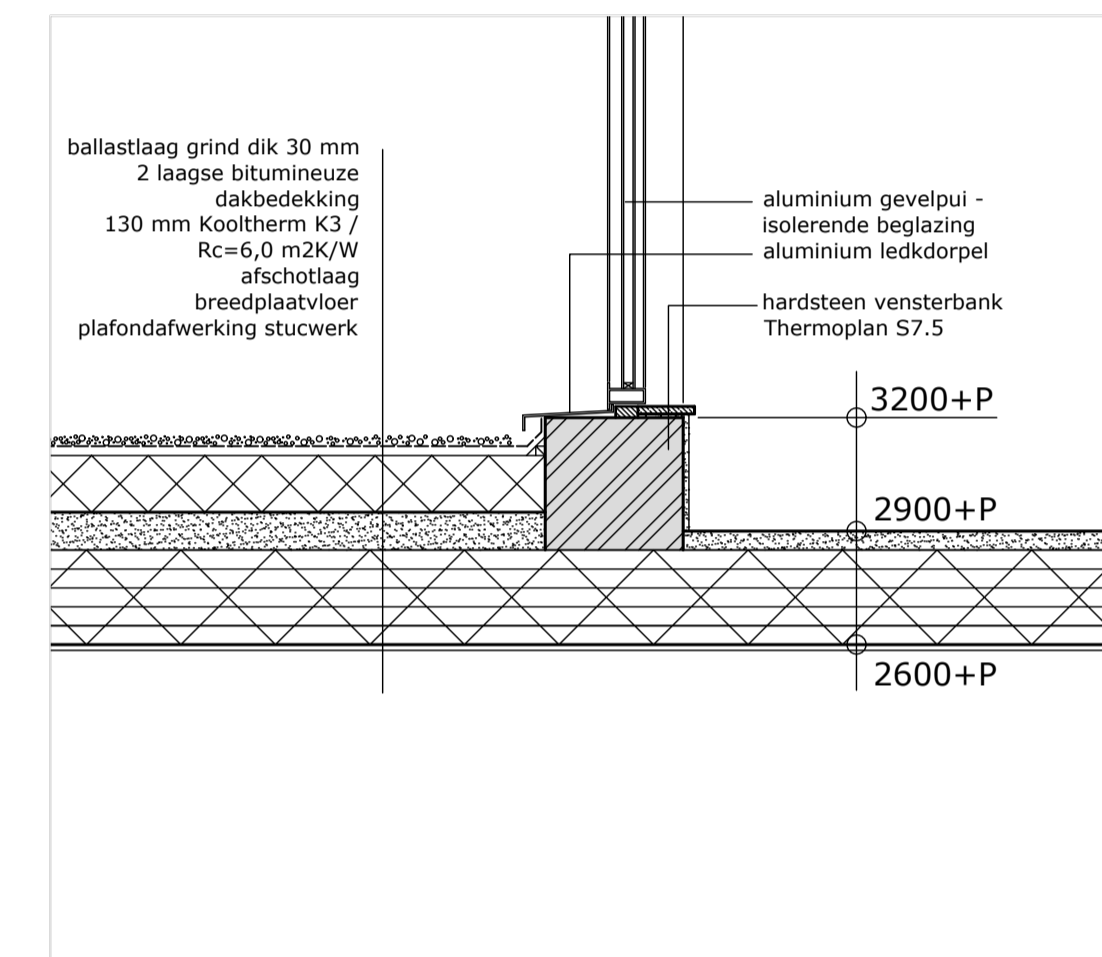
DETAIL 02



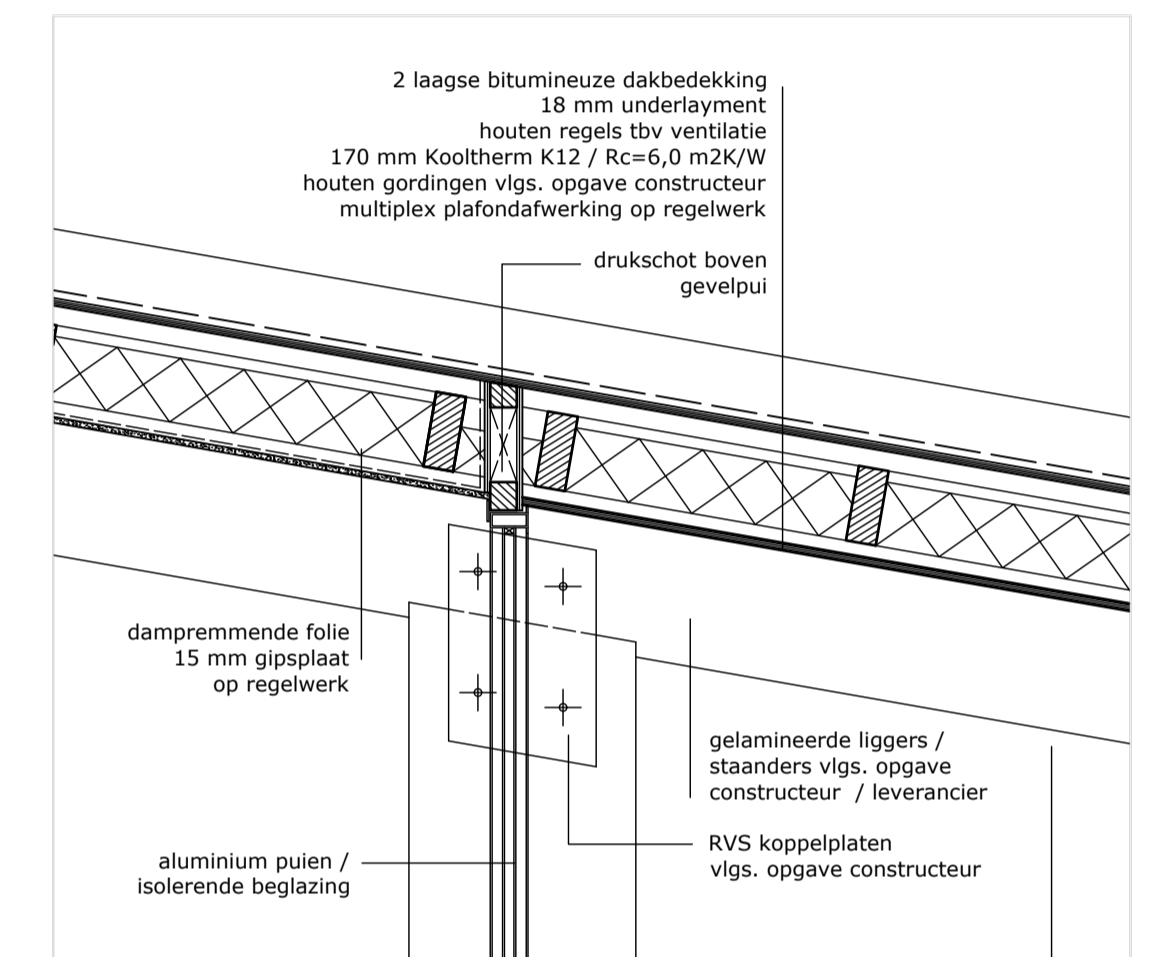
DETAIL 03



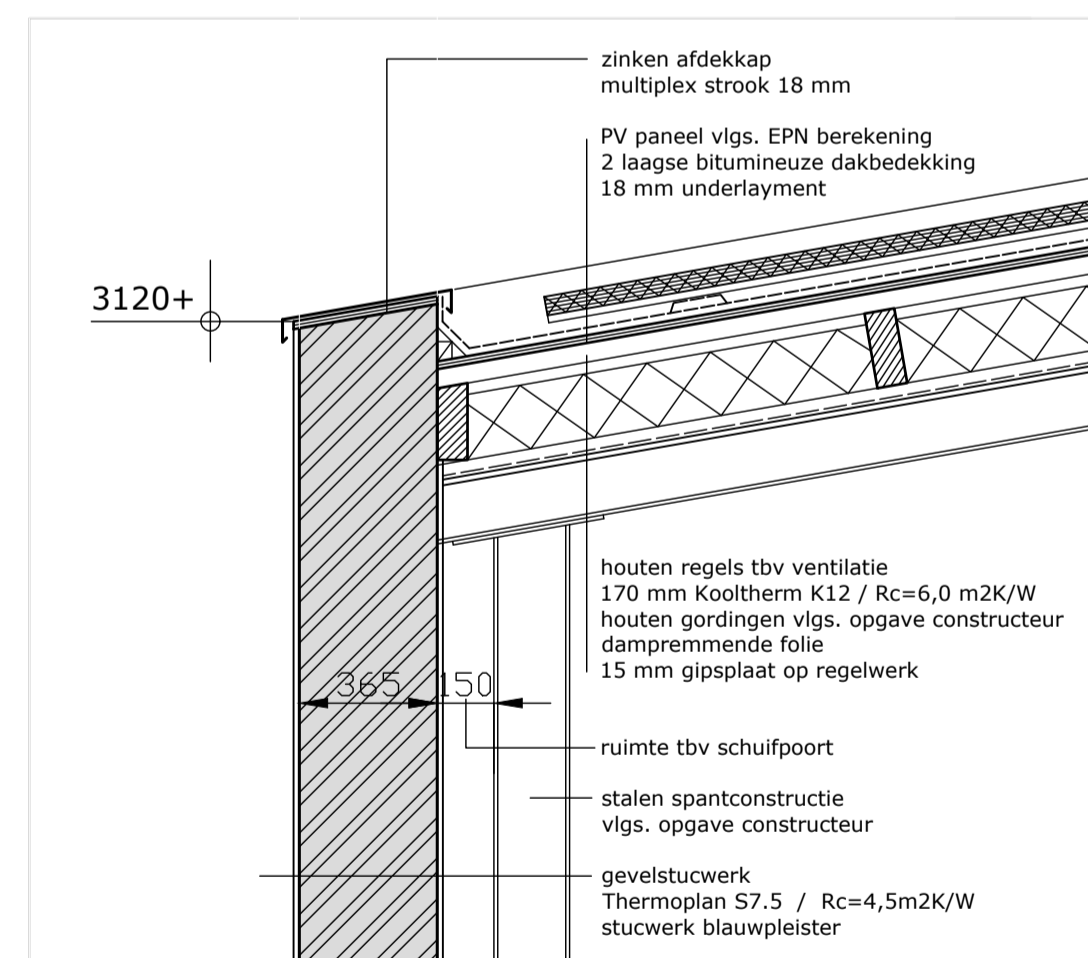
DETAIL 04



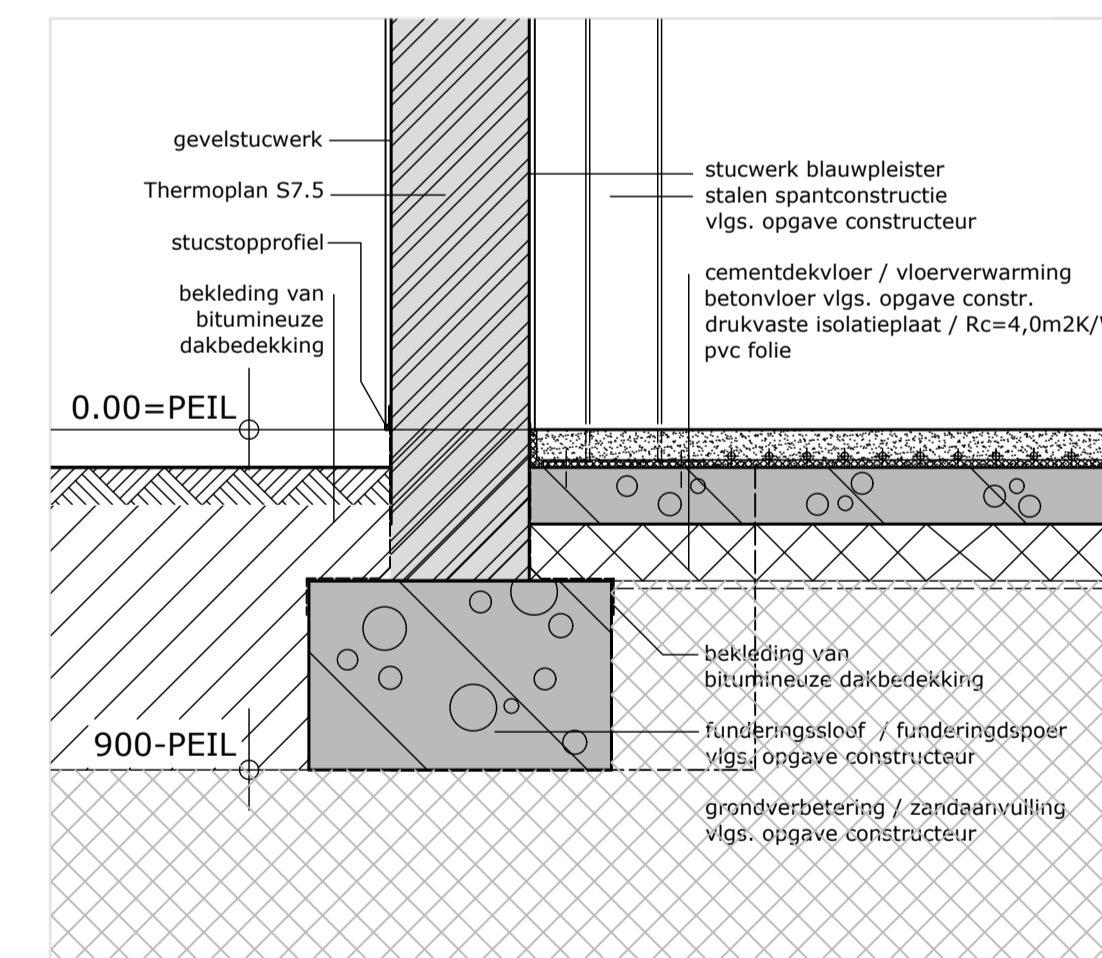
DETAIL 05



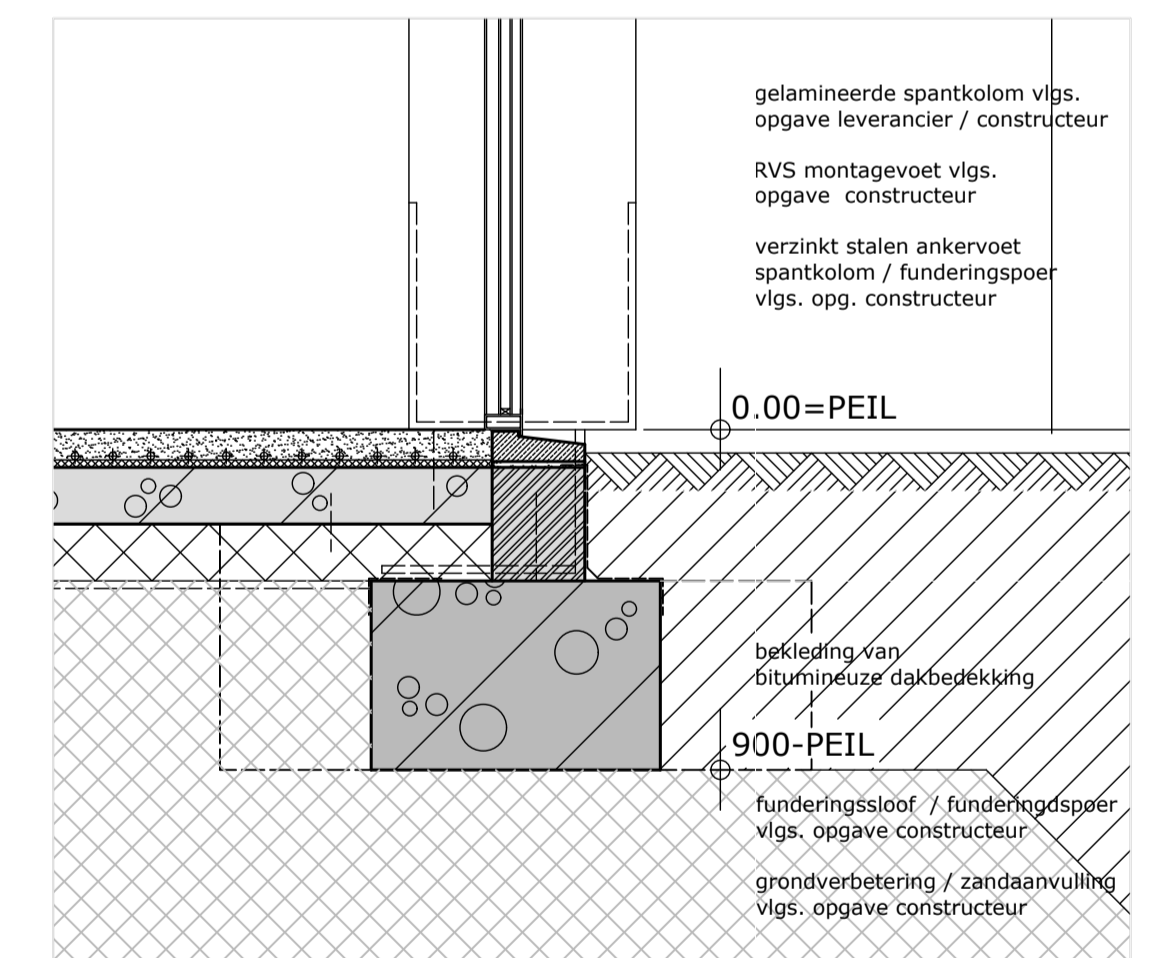
DETAIL 06



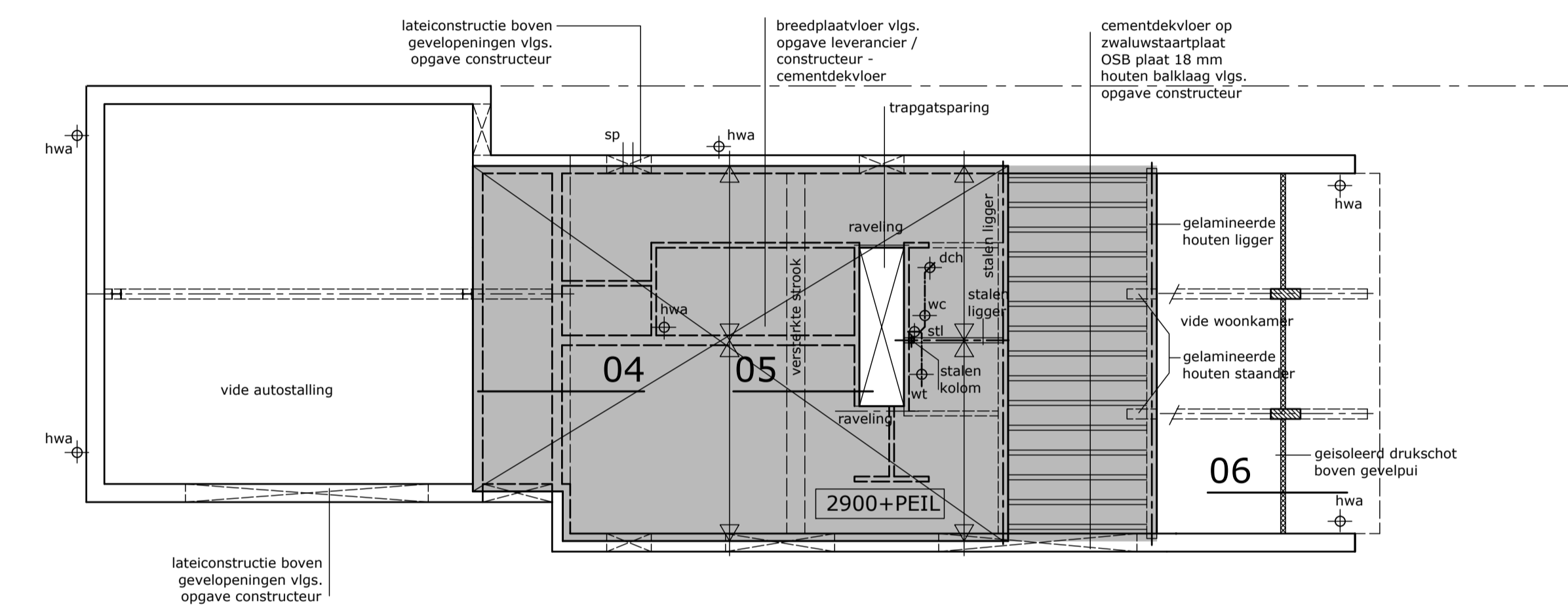
DETAIL 07



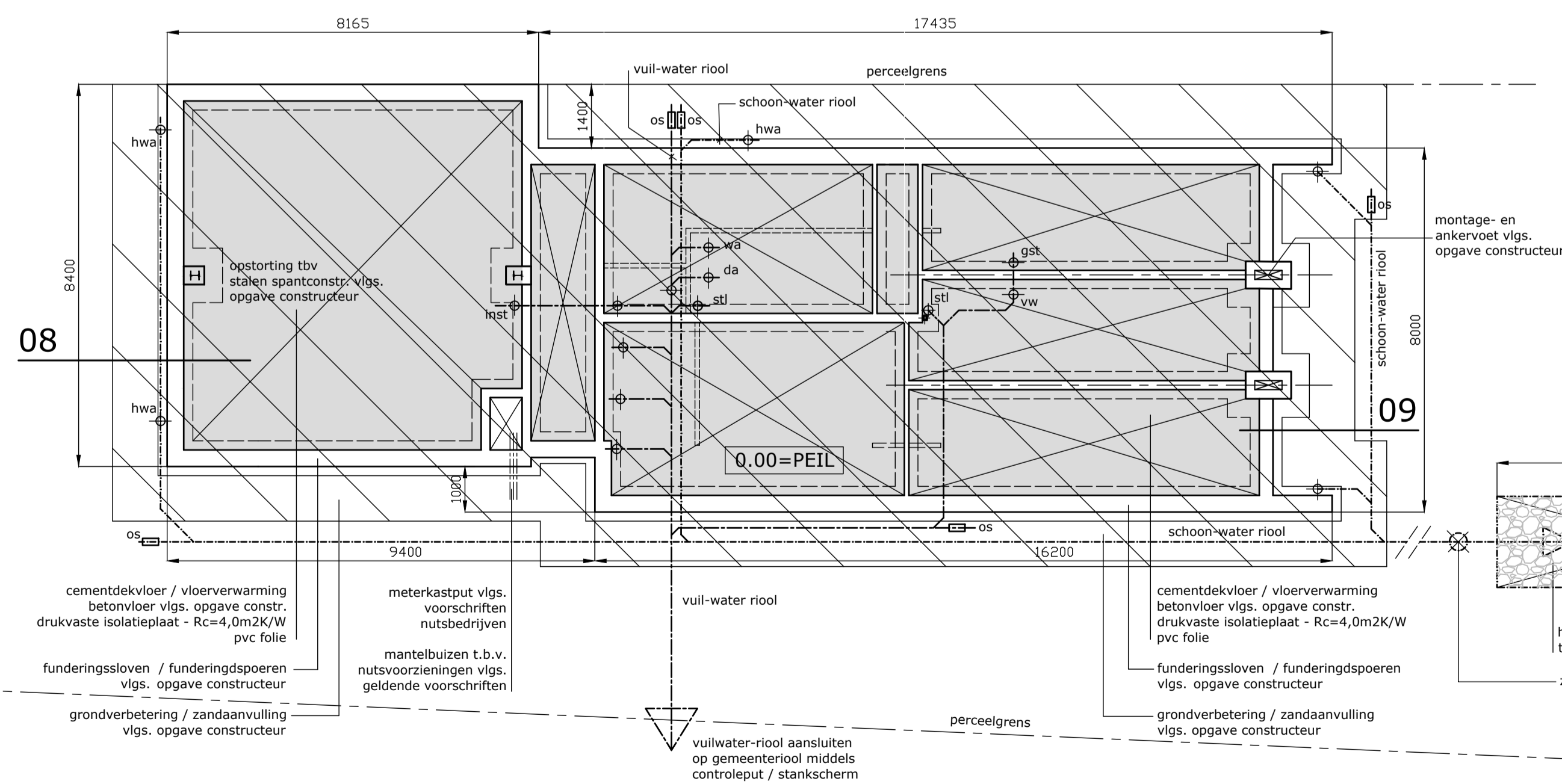
DETAIL 08



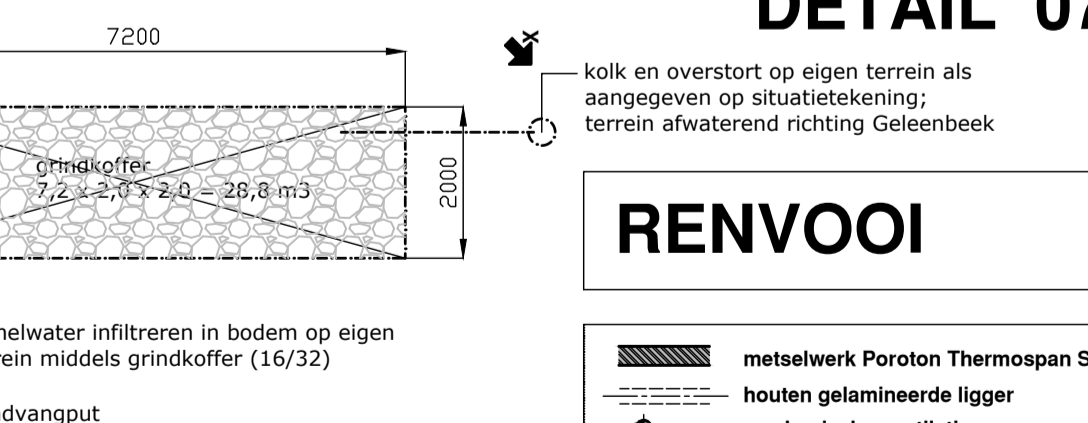
DETAIL 09



## VERDIEPINGVLOER - 2900+P



## FUNDIERING / RIOLERING / BEGANE GRONDVLOER - 0.00=PEIL



## RENVOOI

- metselwerk Poroton Thermospan S8
- houten gelamineerde ligger
- mechanische ventilatie
- rookmeider conform NEN 2555
- hang- en sluitwerk conform inbraakwerendheidsklasse II
- ww
- ggt
- wc
- wst
- dch
- wa
- inst
- stl
- os
- hwa
- sp
- vaatwasser
- gootsteen
- watercloset
- wastafel
- douche
- wasautomat
- overloop installatie
- standleiding
- ontstoppingsgatuk
- hemelwaterafvoer
- spuwer

ALLE MATEN EN AFMETINGEN IN HET WERK TE METEN EN TE CONTROLEREN

TECHNISCHE INSTALLATIES VOLGENS OPGAVE INSTALLATEUR EN UIT TE VOEREN OVEREENKOMSTIG DE GELDENDE VOORSCHRIFTEN

CONSTRUCTIEGEGEVENS FUNDIERINGEN, BETON- HOUT- EN STAALCONSTRUCTIES VOLGENS TEKENINGEN EN BEREKENINGEN CONSTRUCTEUR

B01 - PLATTEGRONDEN / GEVELS / DOORSNEDE / SITUATIE

B02 - TECHNISCHE PLATTEGRONDEN / DETAILS

ontwerpburo architecten

Nieuwbouw Villa Polman  
Molenstraat  
Munstergemeen

Th. F. M. Polman  
Geleenstraat 2b  
6151 EX Munstergemeen

1:100 / 1:500  
mm  
A1

01-07-2019  
10-12-2019

www.moonenoga.nl

TEKENING BOUWBSLUITTOETSING  
TECHNISCHE PLATTEGRONDEN / DETAILS

BURO OGA GELEEN 06-483 71077

B04 219321