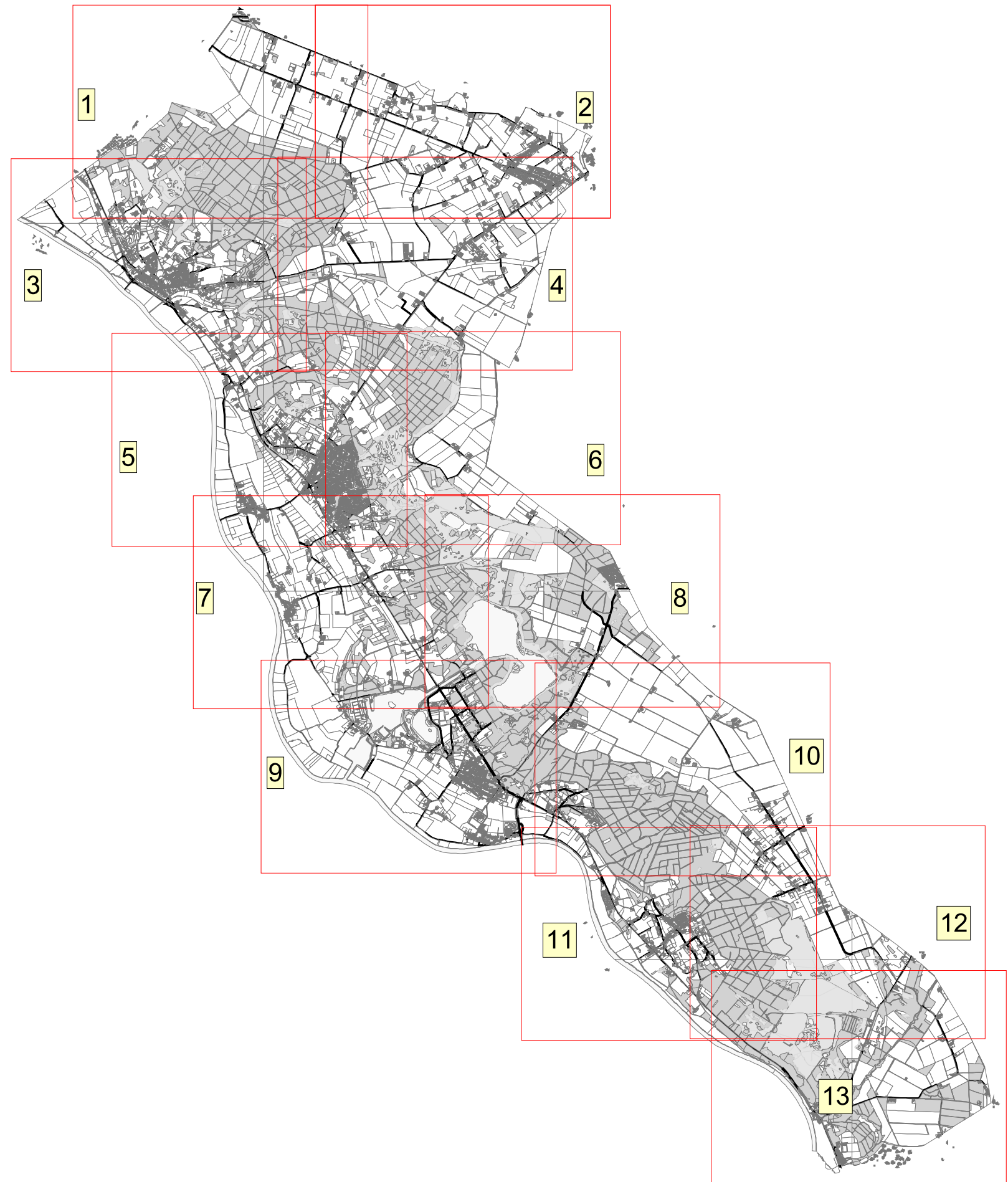


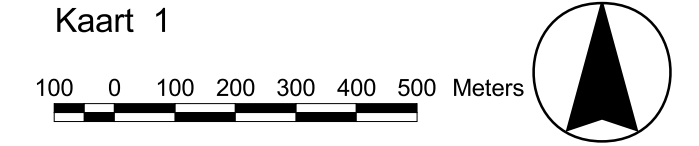
Landschapsplan gemeente Bergen [Limburg]

bijlage a: Atlas landschappelijke elementen



197000 197500 198000 198500 199000 199500 200000 200500 201000 201500

Kaart 1

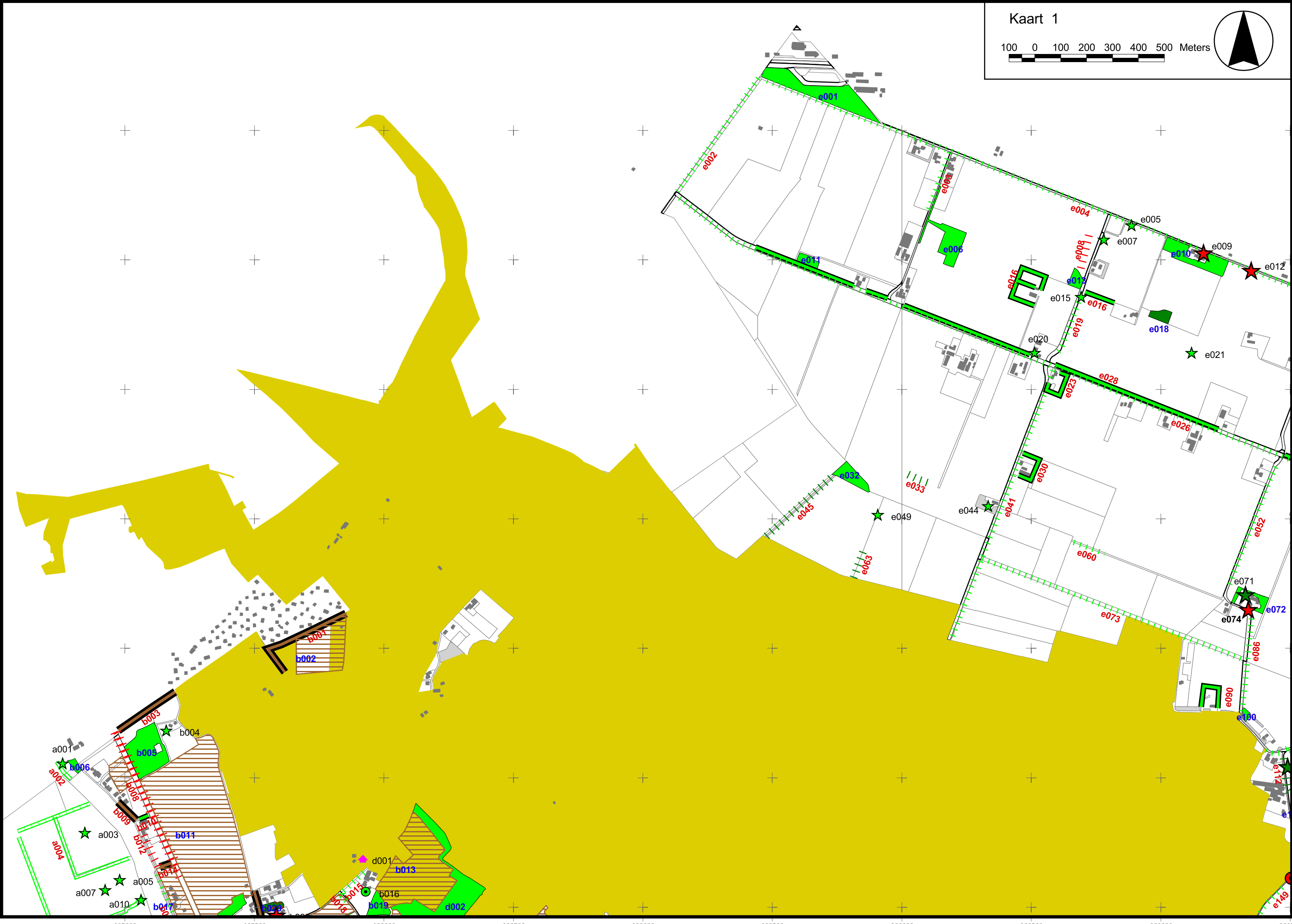


100 0 100 200 300 400 500 Meters

A scale bar showing distances from 0 to 500 meters in increments of 100. To the right of the scale bar is a north arrow pointing upwards, enclosed in a circle.

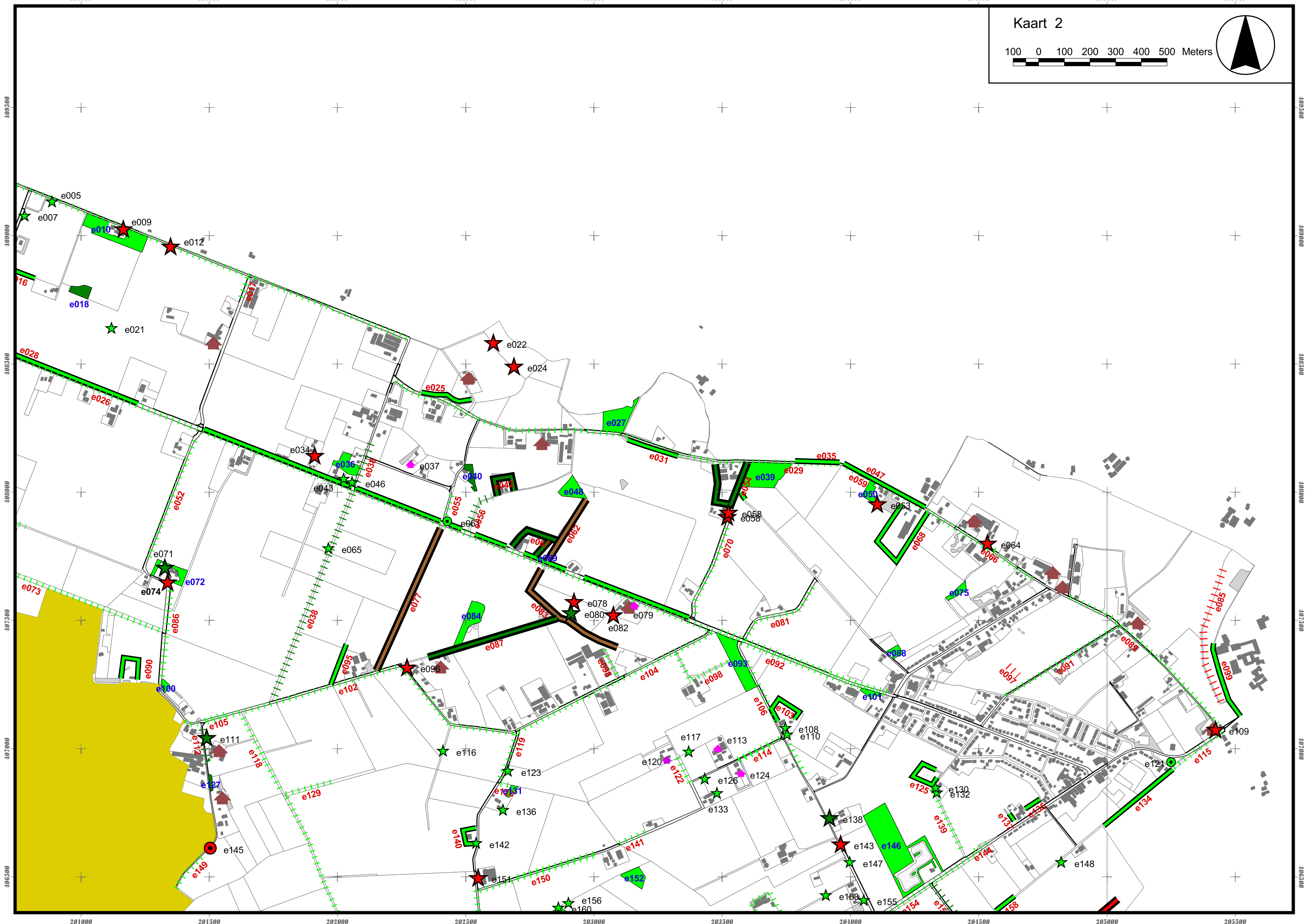
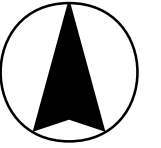
406500
407000
407500
408000
408500
409000
409500

406500
407000
407500
408000
408500
409000
409500

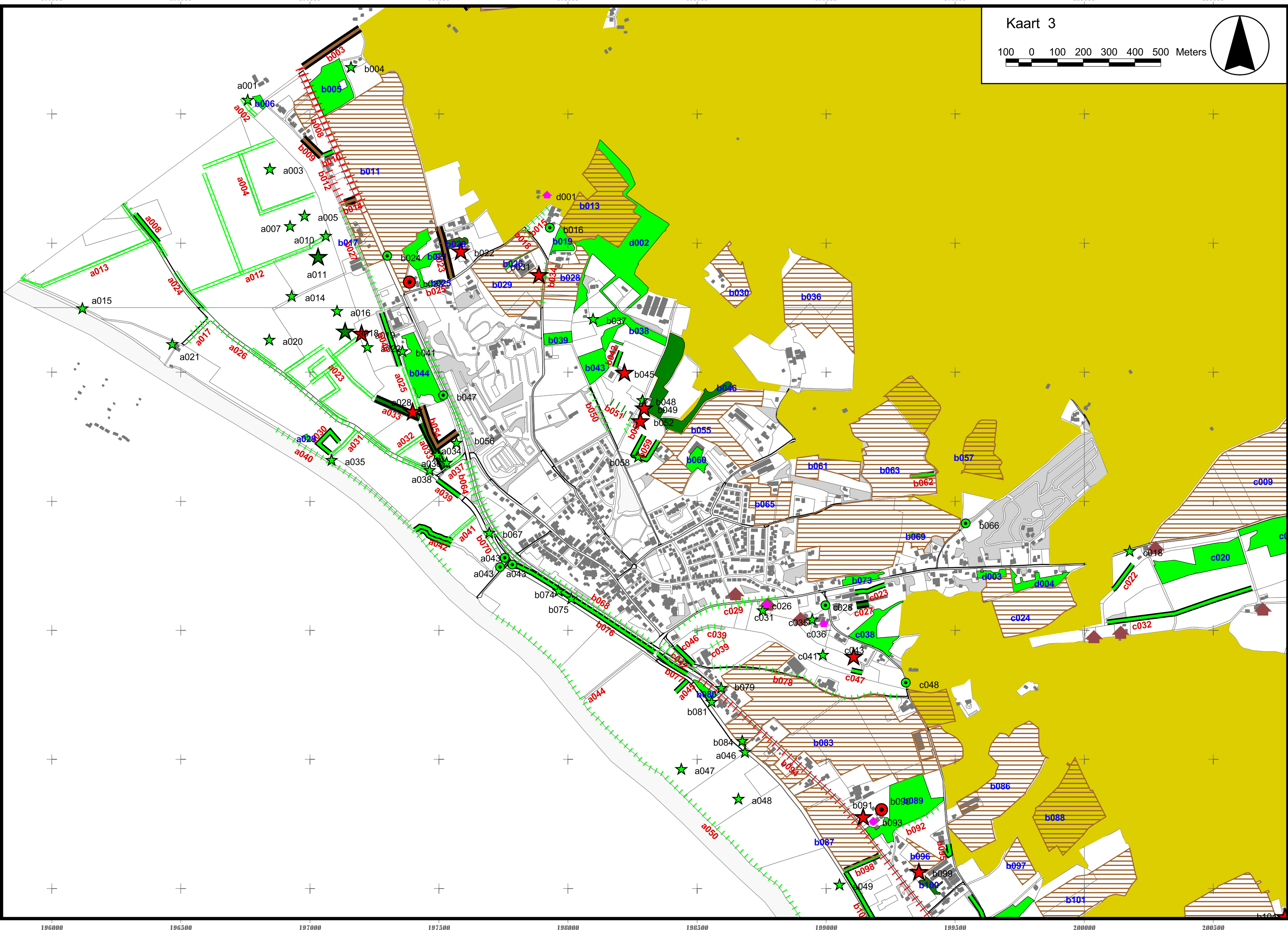
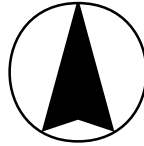
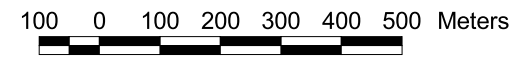


Kaart 2

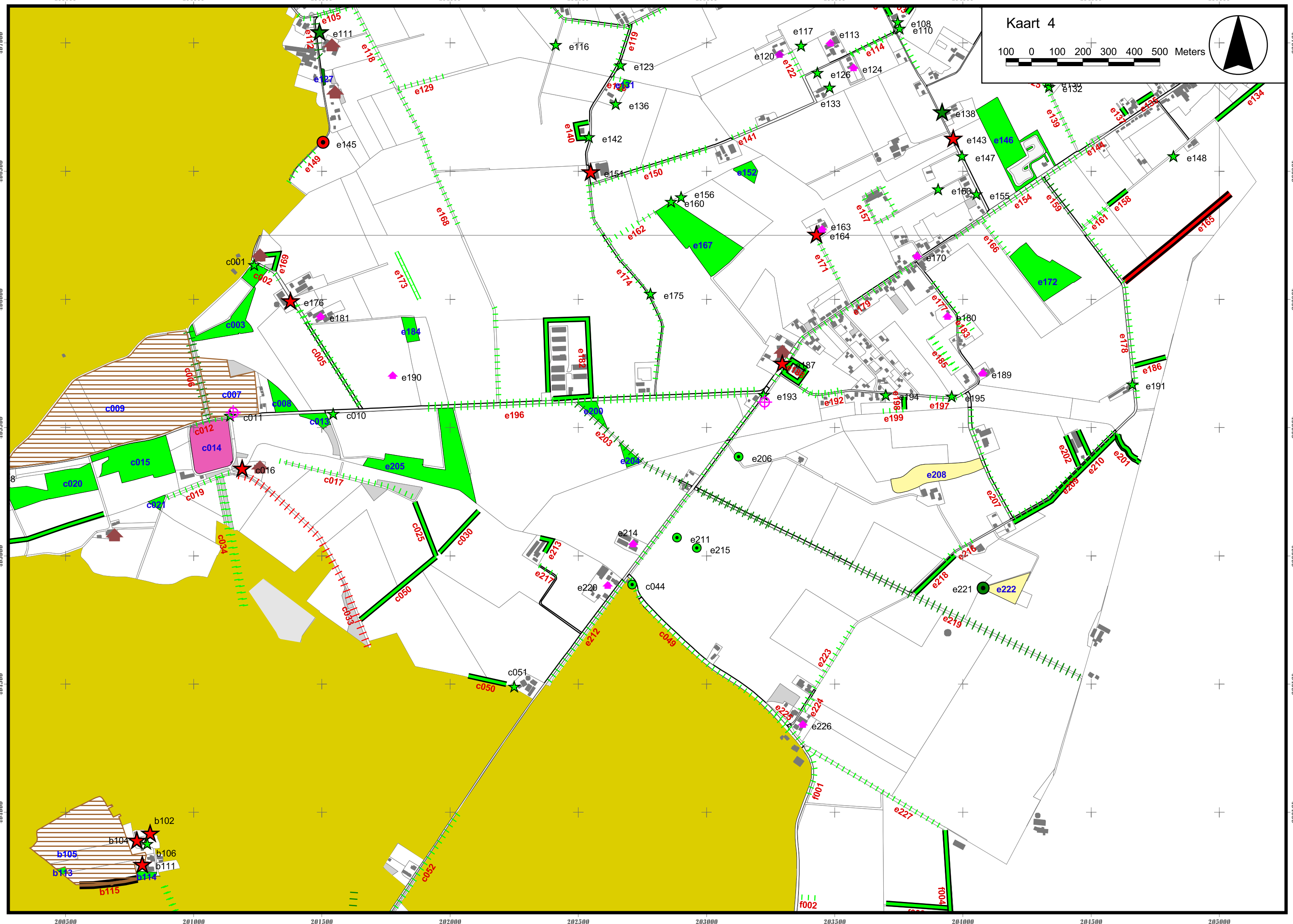
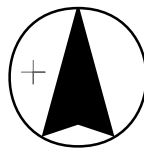
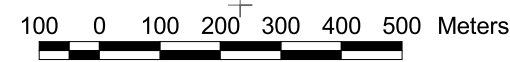
100 0 100 200 300 400 500 Meters



Kaart 3



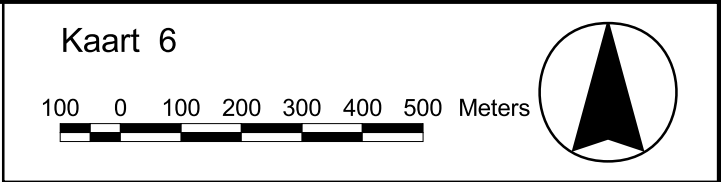
Kaart 4



20200 202500 203000 203500 204000 204500 205000 205500 206000 206500

Kaart 6

100 0 100 200 300 400 500 Meters



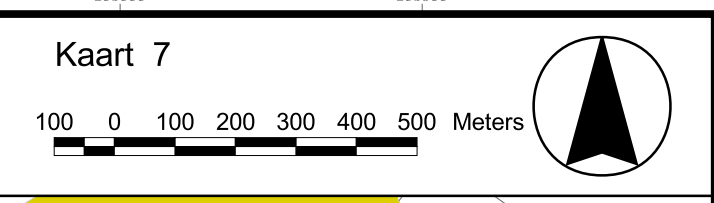
401000
403500
403000
402500
402000
401500
401000

401000
403500
403000
402500
402000
401500
401000



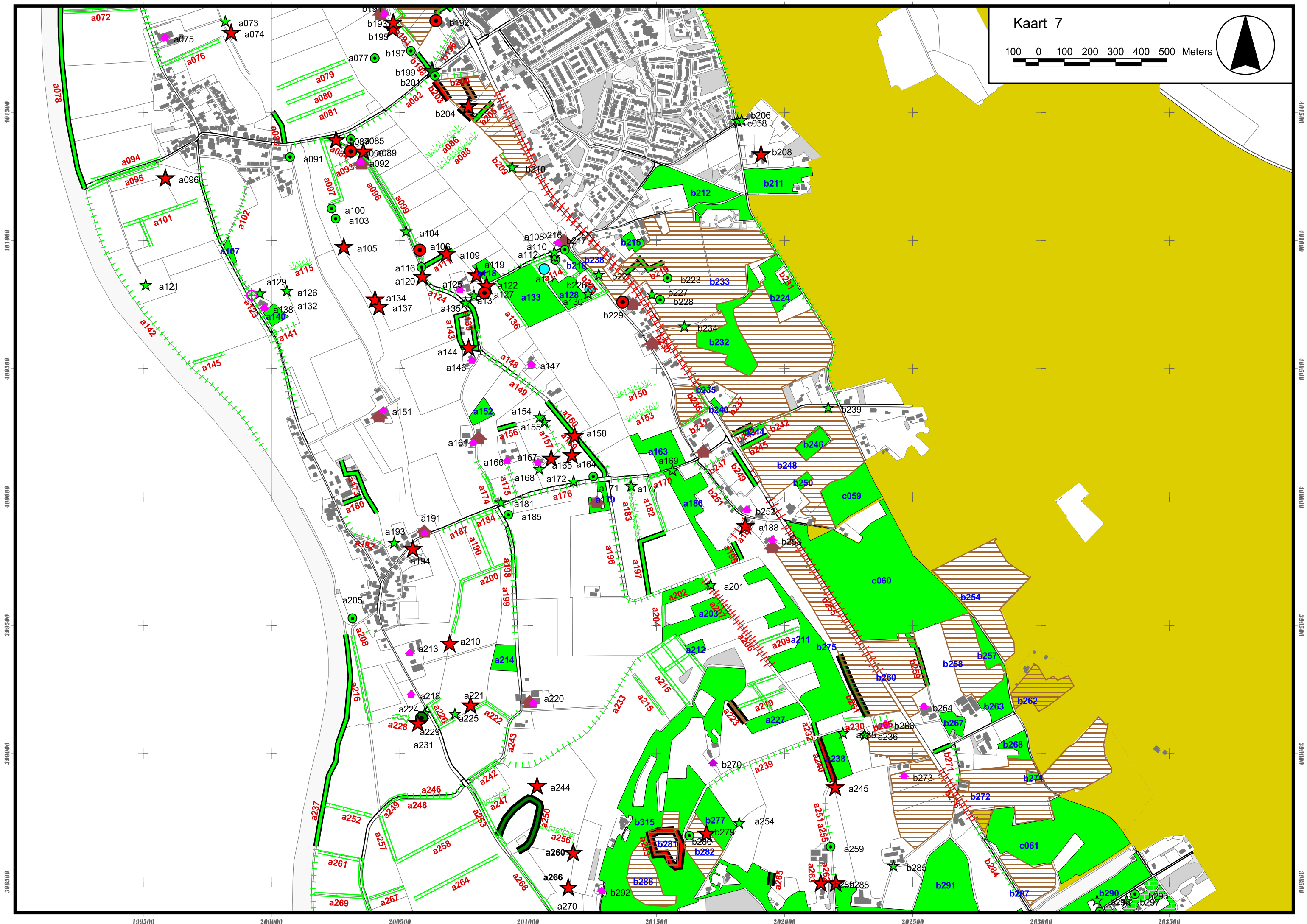
20200 202500 203000 203500 204000 204500 205000 205500 206000 206500

Kaart 7



100 0 100 200 300 400 500 Meters

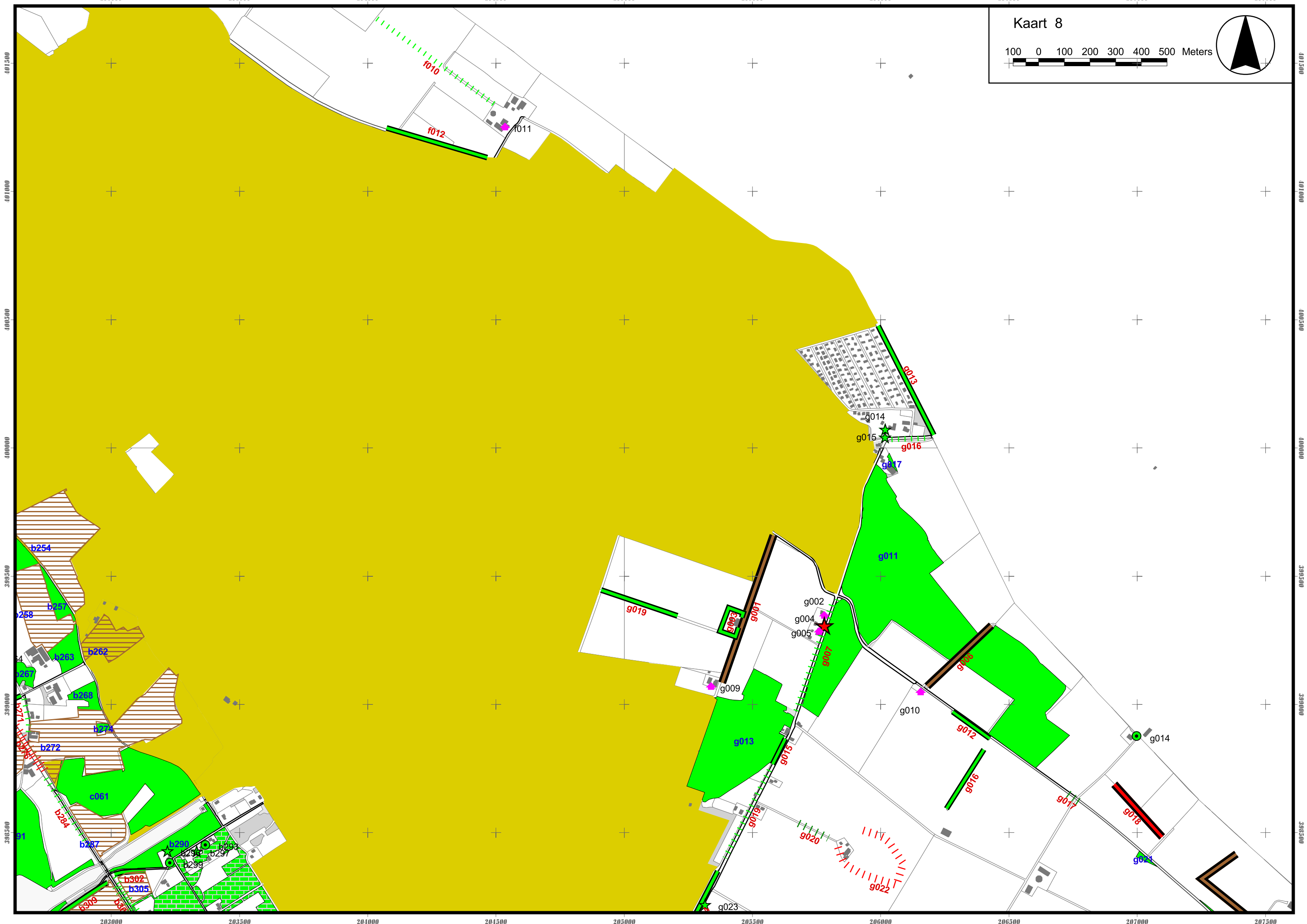
A scale bar showing distances from 0 to 500 meters in increments of 100. To the right of the scale bar is a north arrow pointing upwards.



203000 203500 204000 204500 205000 205500 206000 206500 207000 207500

Kaart 8

100 0 100 200 300 400 500 Meters

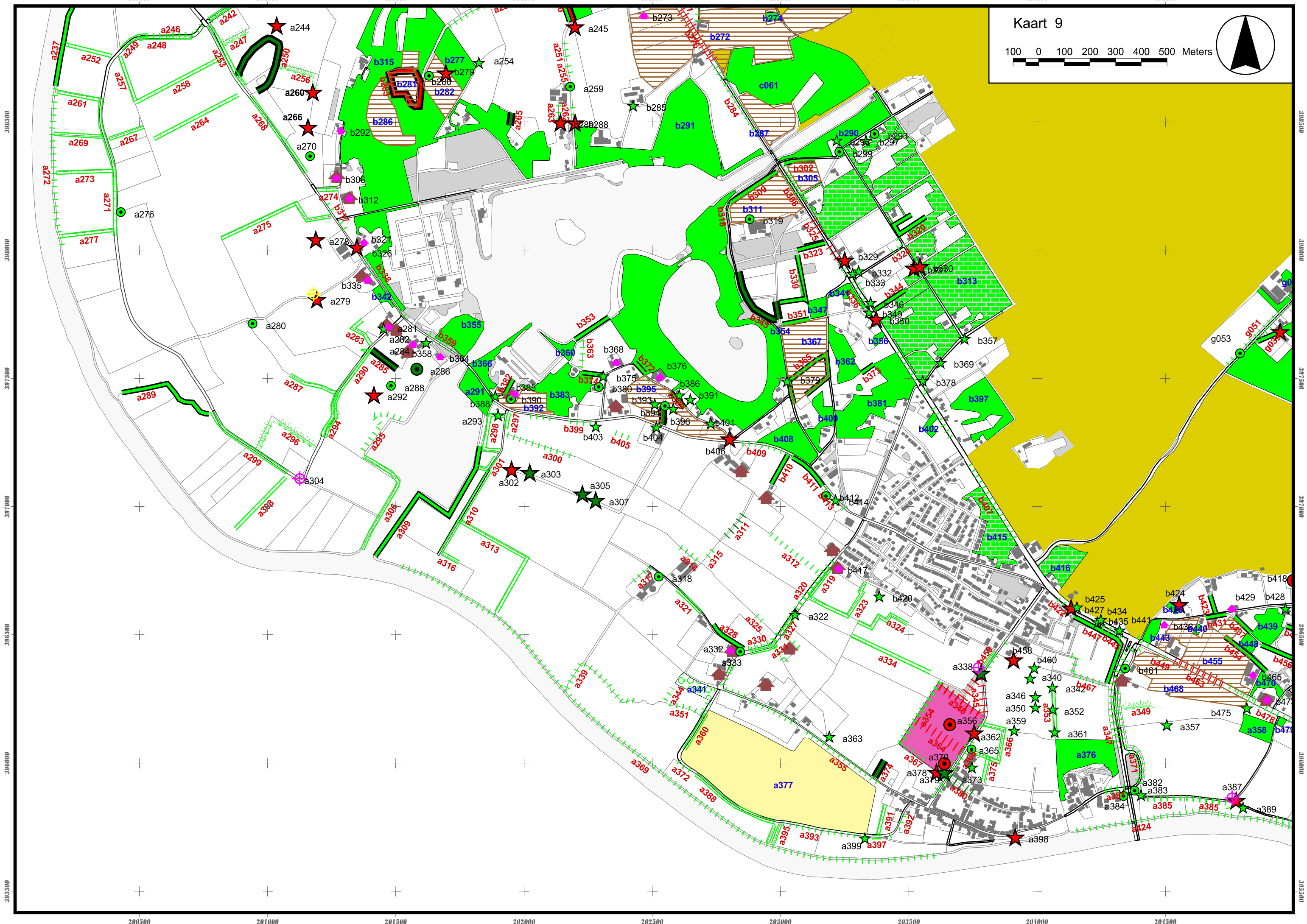
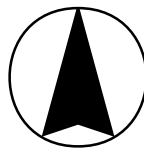


203000 203500 204000 204500 205000 205500 206000 206500 207000 207500

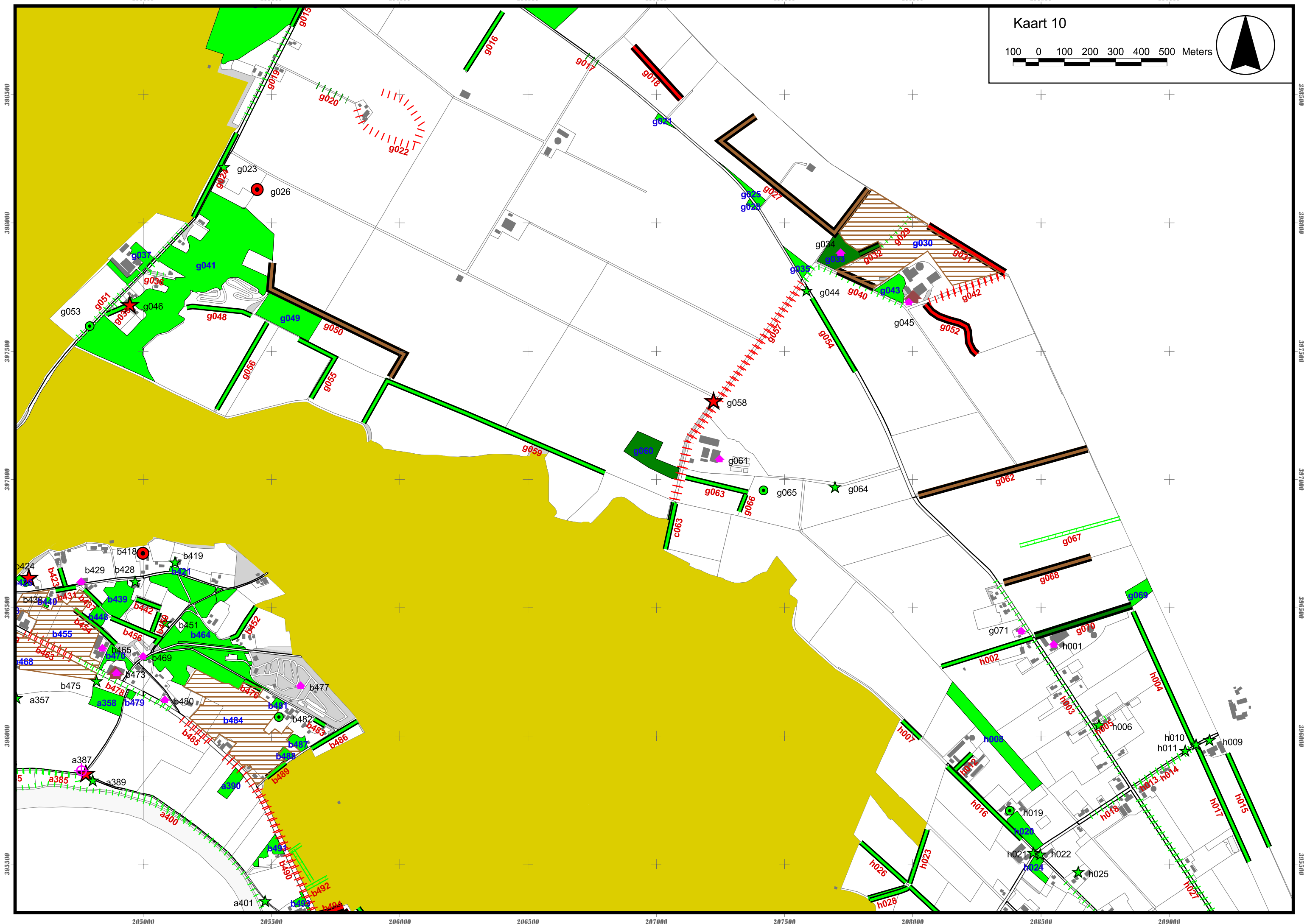
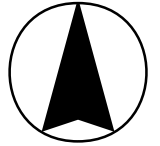
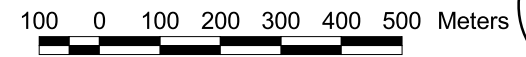
398500 399000 399500 400000 400500 401000 401500

Kaart 9

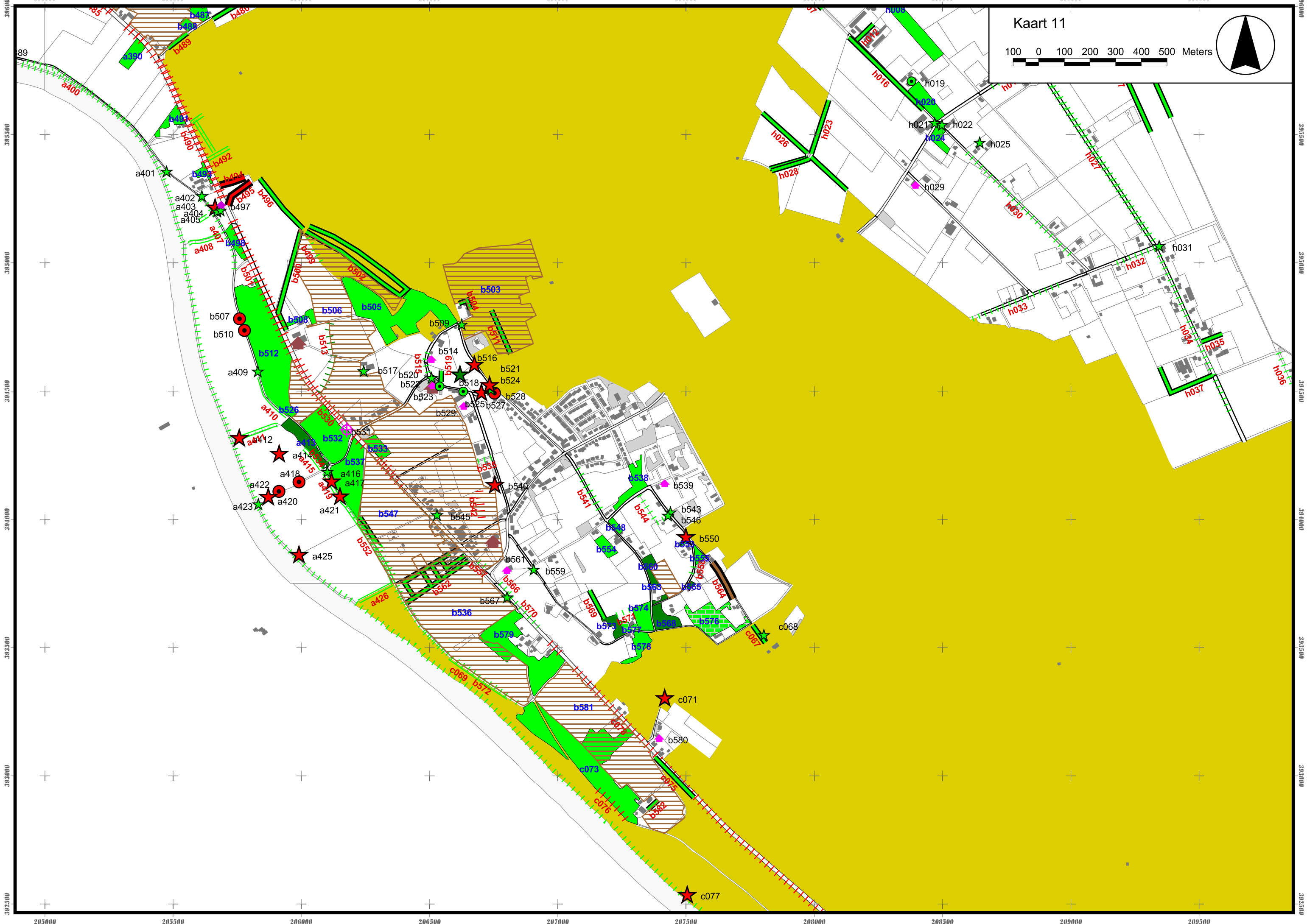
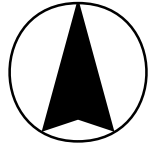
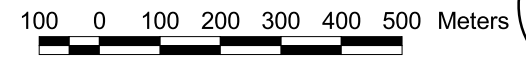
100 0 100 200 300 400 500 Meters



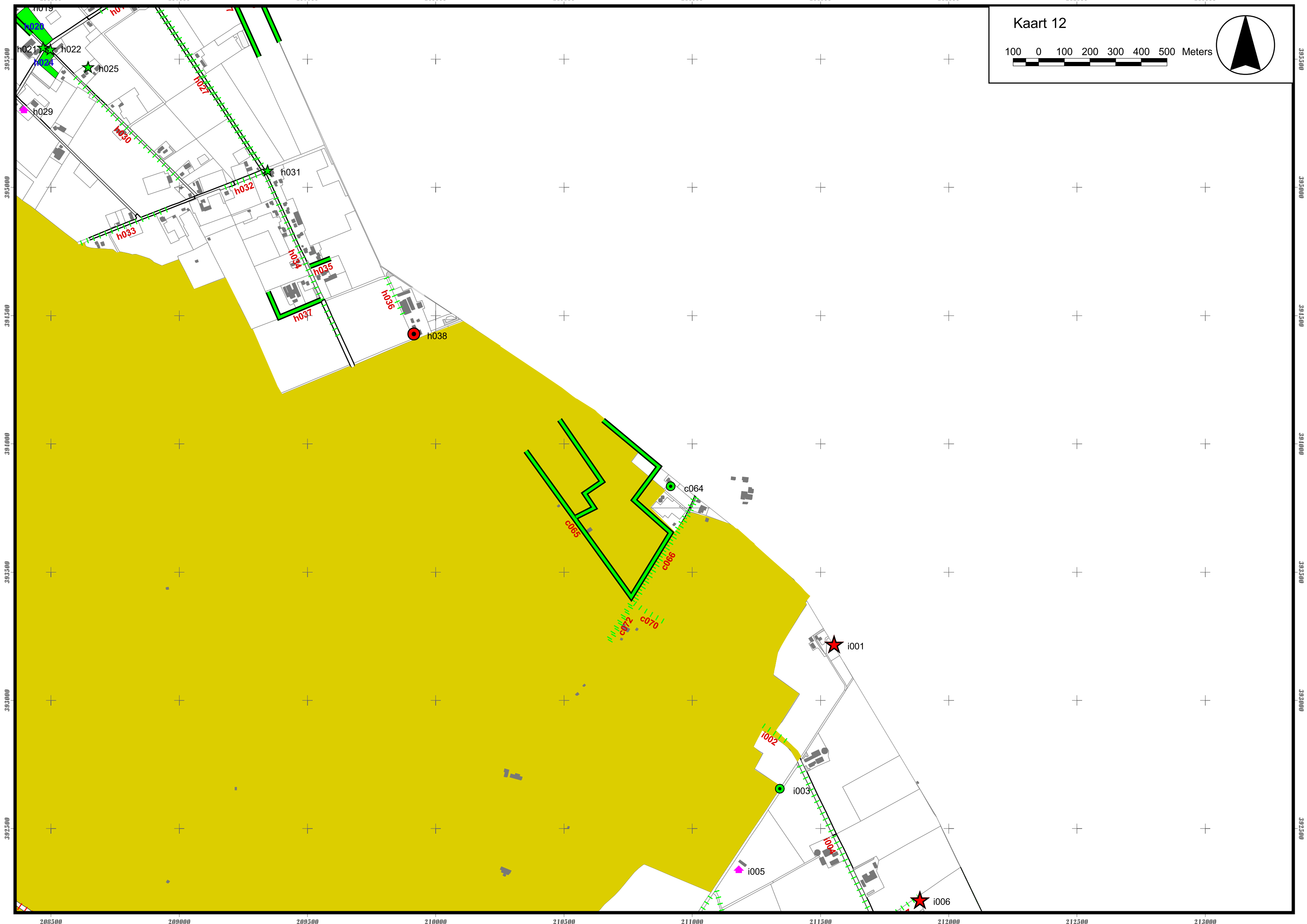
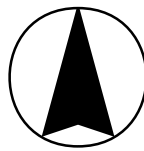
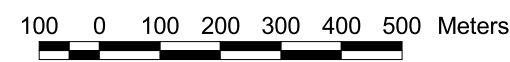
Kaart 10



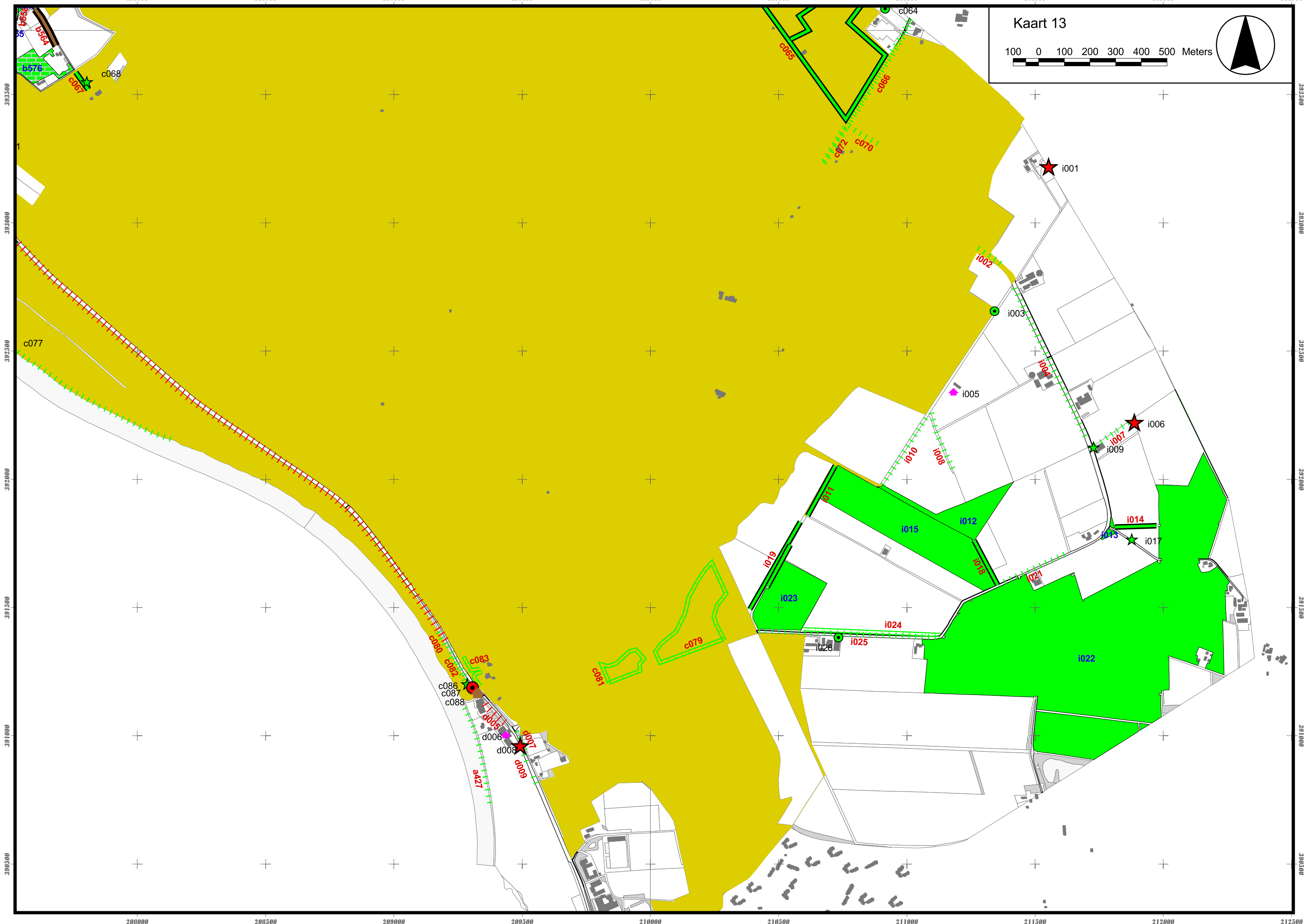
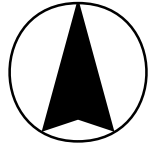
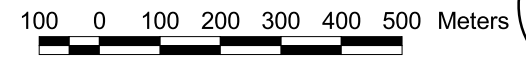
Kaart 11



Kaart 12



Kaart 13

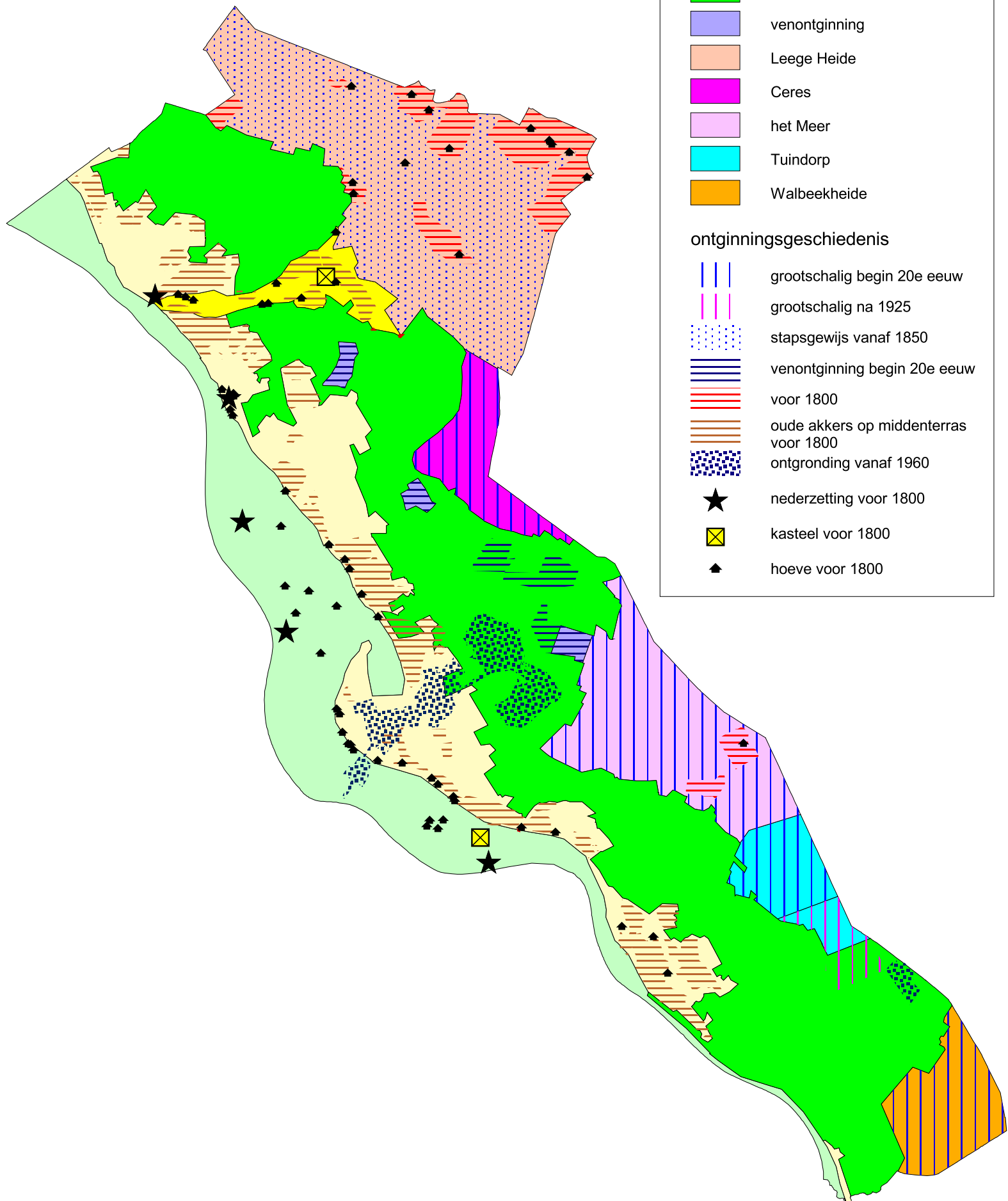


landschappelijke eenheden

- laagterras
- midenterras
- beekdal Eckeltse beek
- Maasduinen
- venontginning
- Leege Heide
- Ceres
- het Meer
- Tuindorp
- Walbeekheide

ontginningsgeschiedenis


















- grootschalig begin 20e eeuw
- grootschalig na 1925
- stapsgewijs vanaf 1850
- venontginning begin 20e eeuw
- voor 1800
- oude akkers op midenterras voor 1800
- ontgroning vanaf 1960
- ★ nederzetting voor 1800
- ☒ kasteel voor 1800
- ▲ hoeve voor 1800



Landschappelijke elementen gemeente Bergen [Limburg]

-  bomenrij
-  eenzijdige laan
-  tweezijdige laan
-  haag
-  houtsingel
-  opslag in sloot
-  solitaire boom
-  boomgroep
-  bosje
-  natuurterrein
-  woonbos
-  bongerd
-  erf opgenomen als voorbeeld
-  poel

elementen met cultuurhistorische waarde

-  bomenrij 100 jaar of ouder
-  eenzijdige laan 100 jaar of ouder
-  tweezijdige laan 100 jaar of ouder
-  haag
-  houtsingel
-  houtsingel 100 jaar of ouder
-  houtwal
-  solitaire boom 100 jaar of ouder
-  boomgroep 100 jaar of ouder
-  bosje 100 jaar of ouder
-  restant oude akker
-  buitenplaats
-  kapel
-  boerderij/huis op locatie hoeve voor 1810
-  veldkruis
-  weg/pad al aanwezig in 1810
-  NP Maasduinen

schaal: 1:12.500

april 2012

getekend Bosland adviesbureau