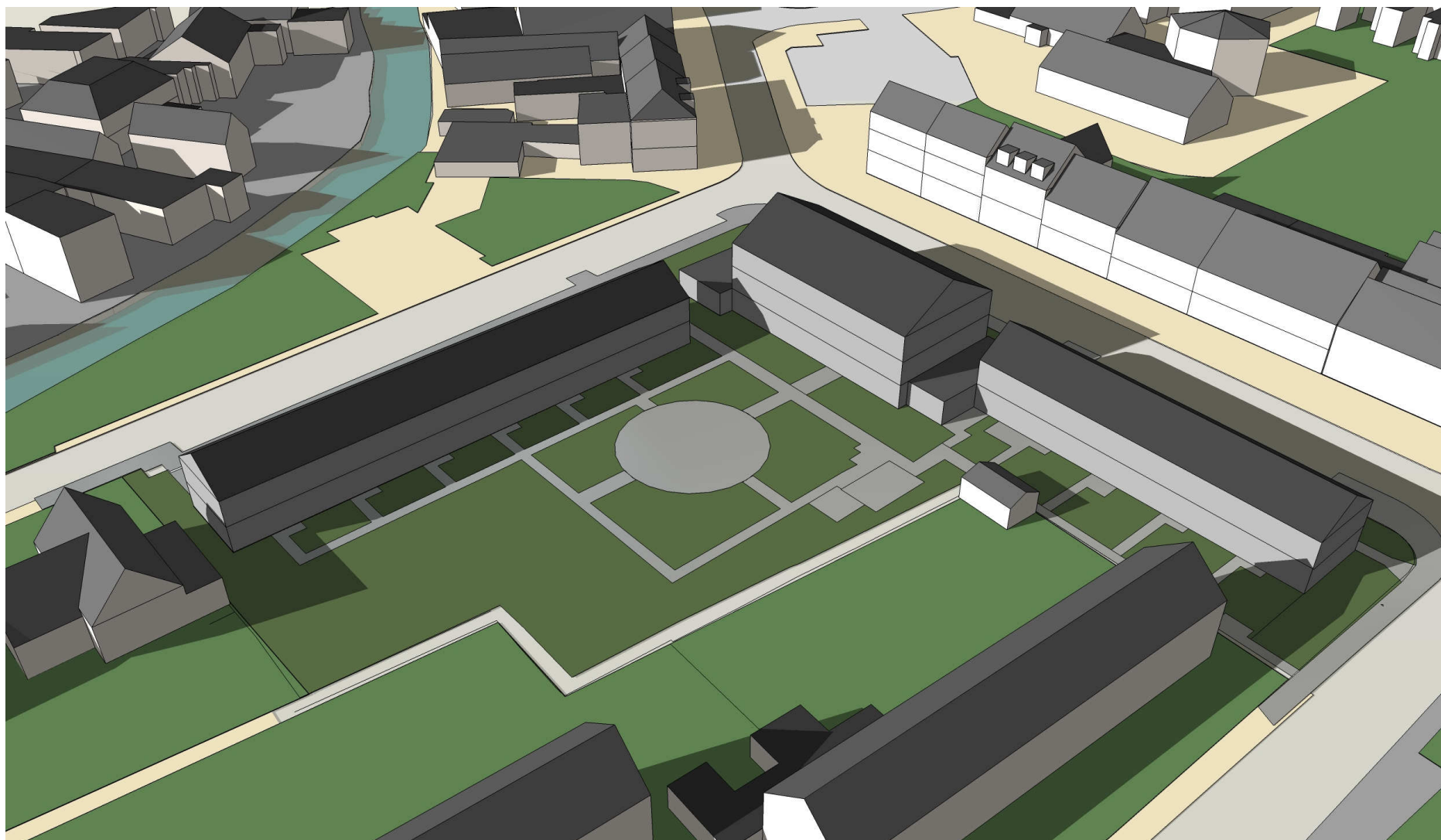


ARCHITECTUUR BUREAU

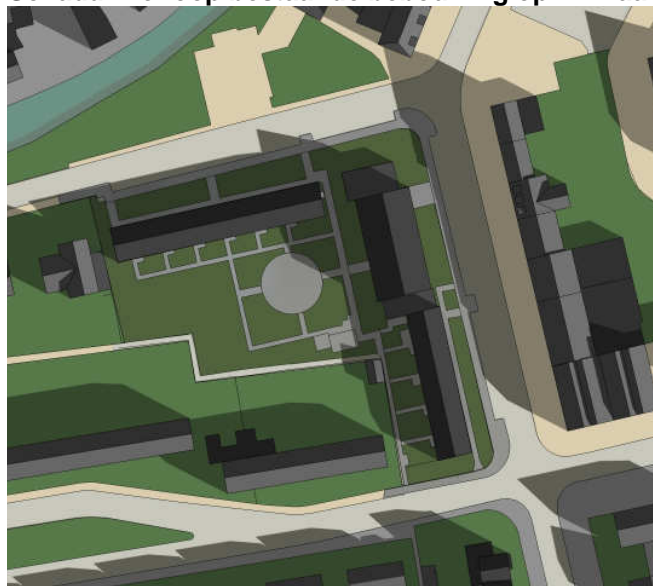
datum 01.09.2010
projectnummer 0109
project "De Driesprong" Harmelen
onderdeel Bezonningstudie

Bestaande bebouwing

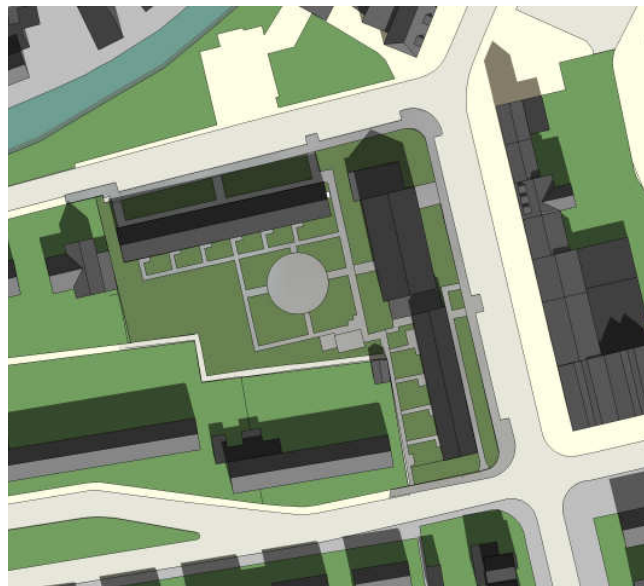


(Zonnestand 21 juni, 18.00 uur)

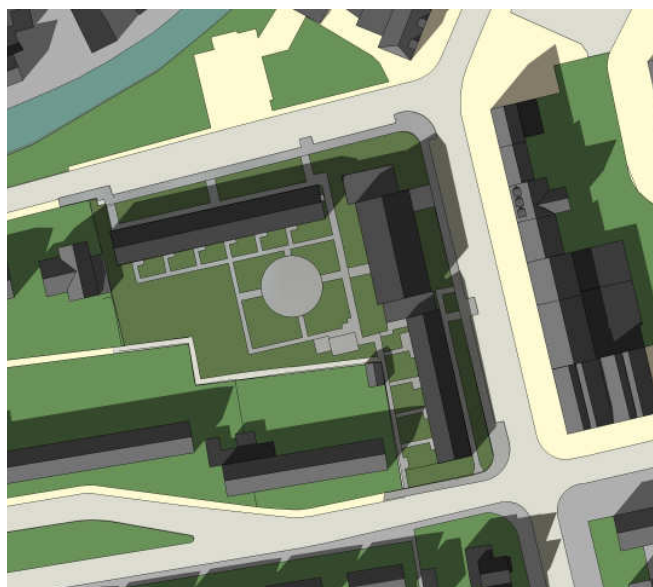
Schaduwverloop bestaande bebouwing op 21 maart



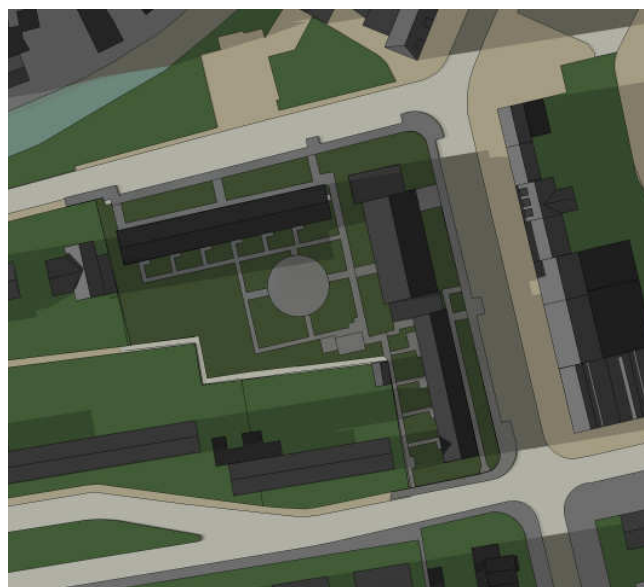
9.00 uur



12.00 uur



15.00 uur

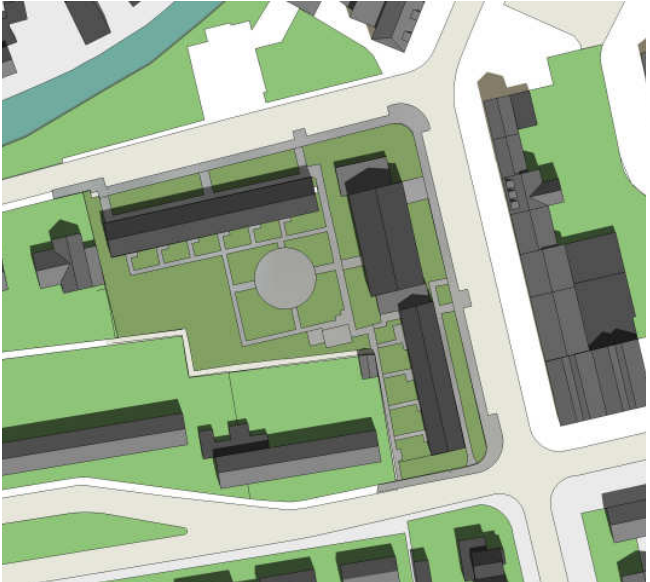


18.00 uur

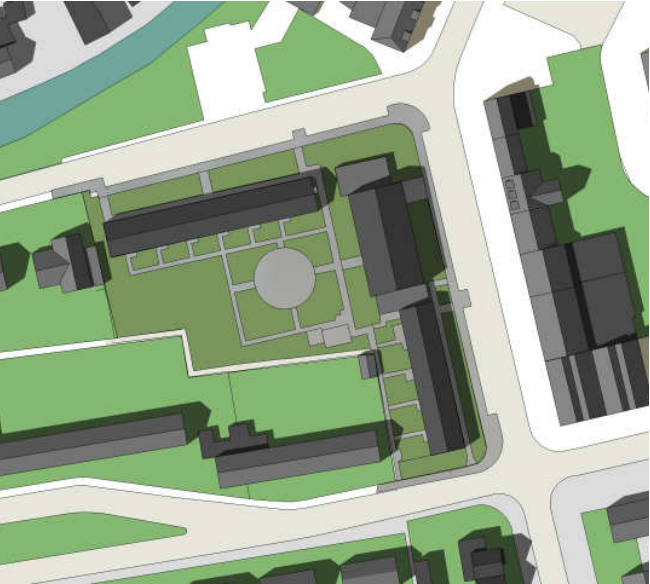
Schaduwverloop bestaande bebouwing op 21 juni



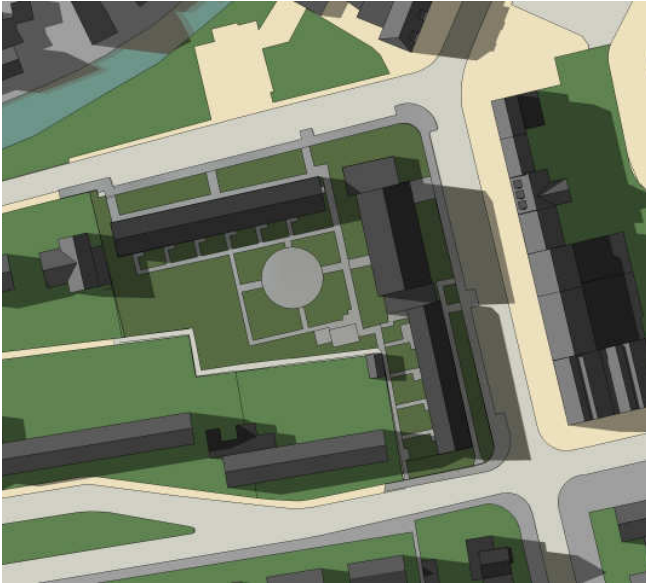
9.00 uur



12.00 uur

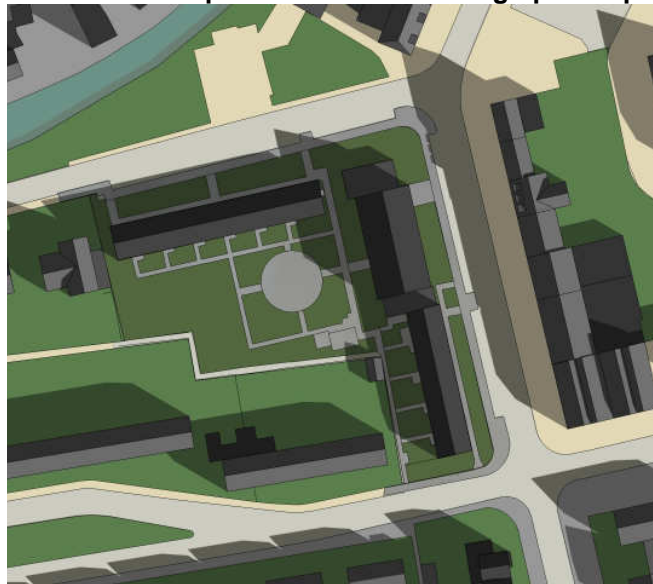


15.00 uur

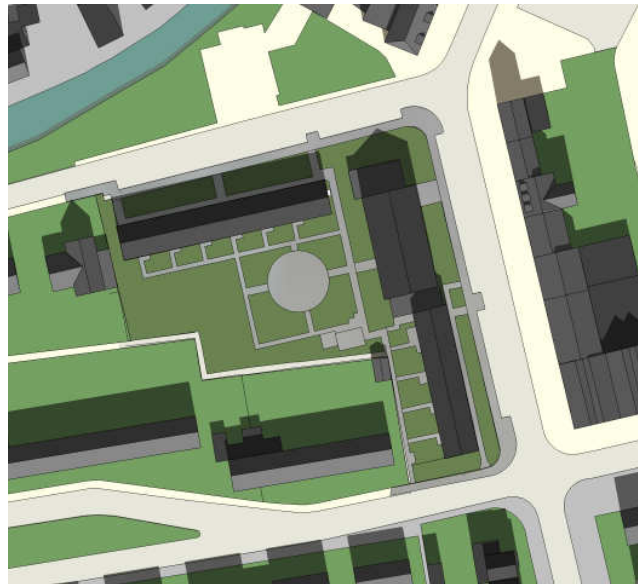


18.00 uur

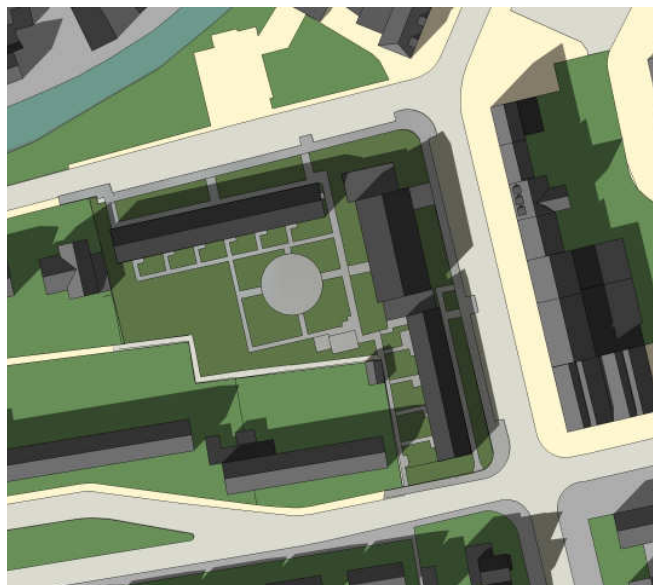
Schaduwverloop bestaande bebouwing op 21 september



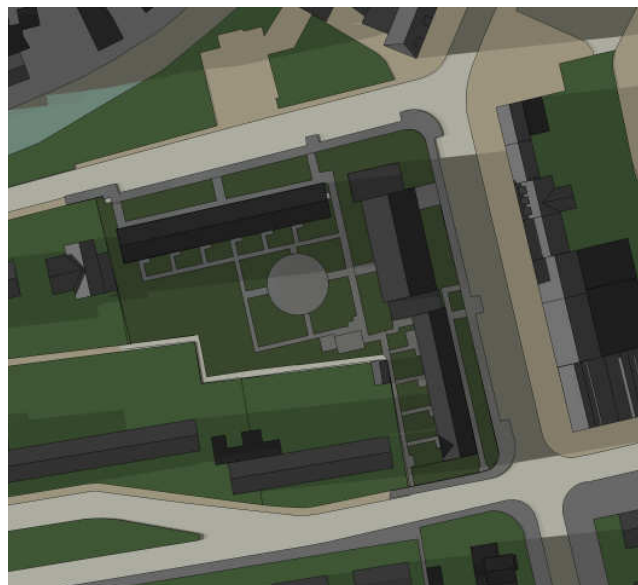
9.00 uur



12.00 uur

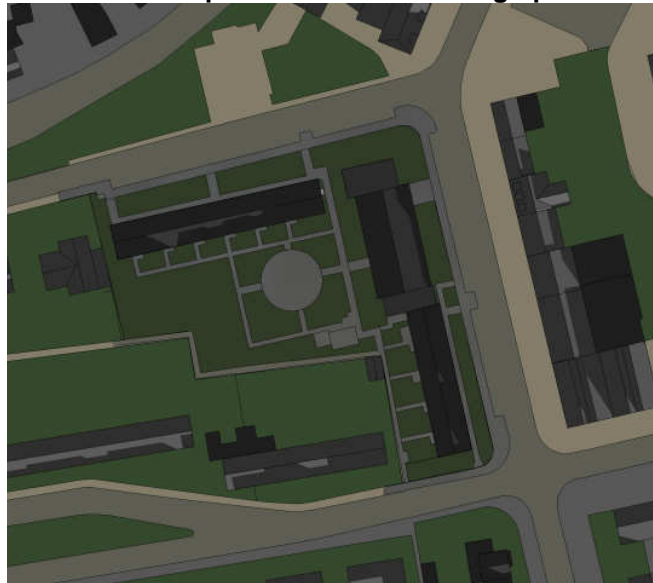


15.00 uur

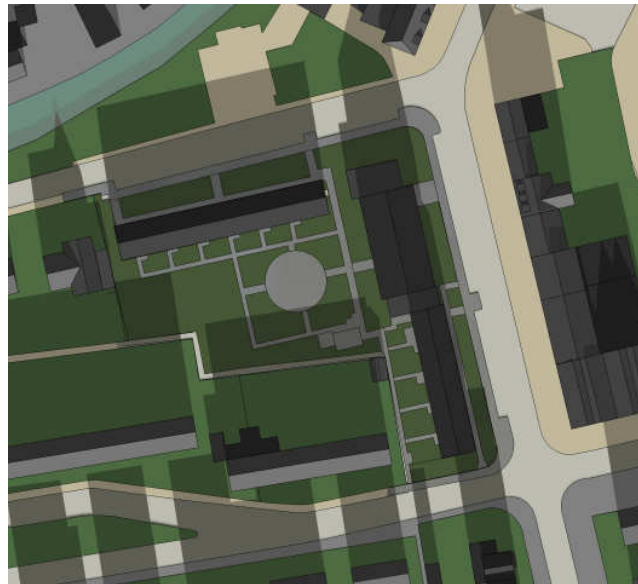


18.00 uur

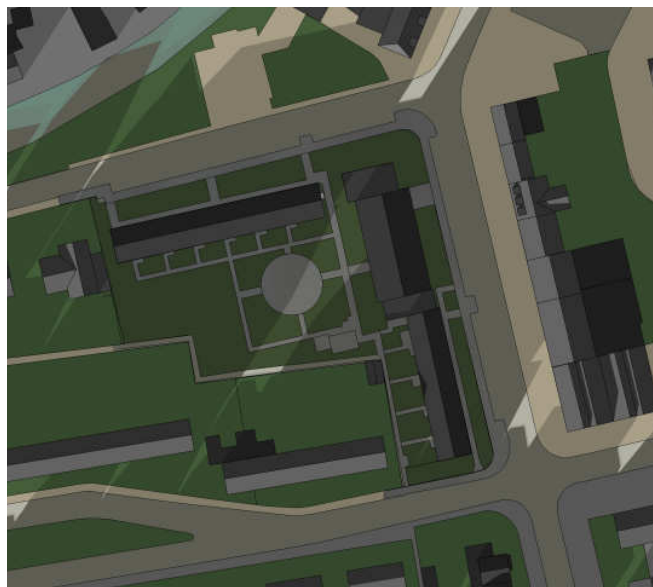
Schaduwverloop bestaande bebouwing op 21 december



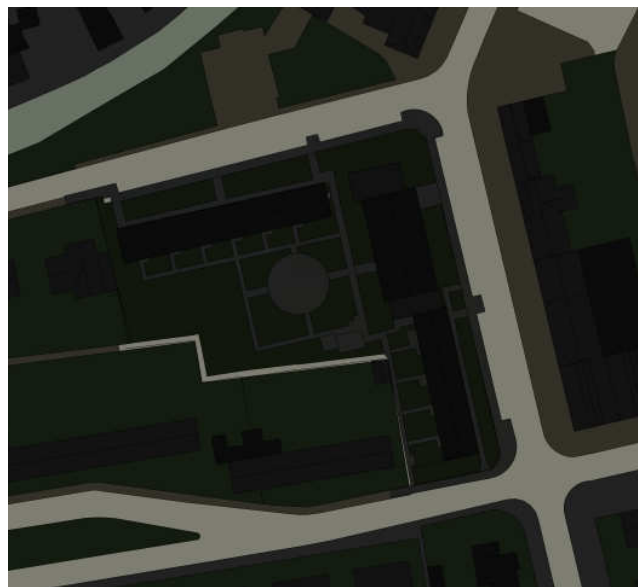
9.00 uur



12.00 uur



15.00 uur



18.00 uur

Nieuwe bebouwing



(Zonnestand 21 juni, 18.00 uur)

Schaduwverloop nieuwbouw op 21 maart



9.00 uur



12.00 uur



15.00 uur

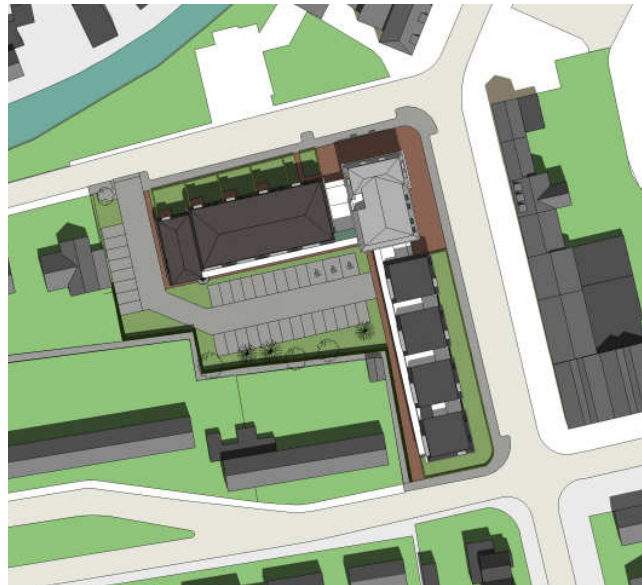


18.00 uur

Schaduwverloop nieuwbouw op 21 juni



9.00 uur



12.00 uur

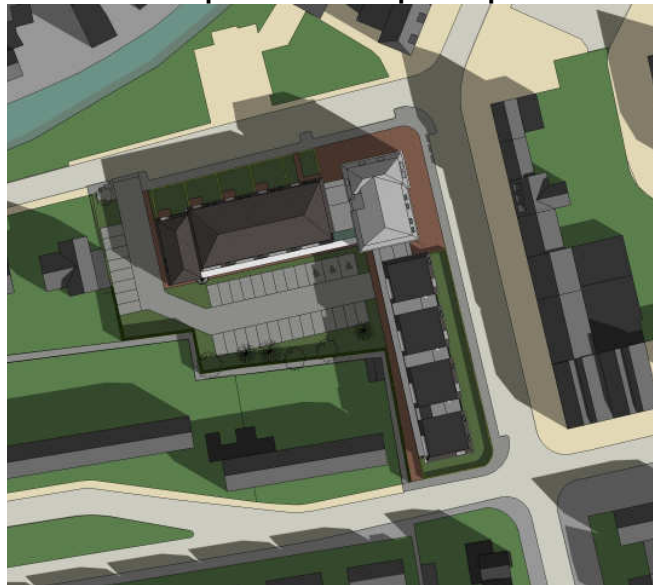


15.00 uur



18.00 uur

Schaduwverloop nieuwbouw op 21 september



9.00 uur



12.00 uur



15.00 uur



18.00 uur

Schaduwverloop nieuwbouw op 21 december



9.00 uur



12.00 uur



15.00 uur



18.00 uur