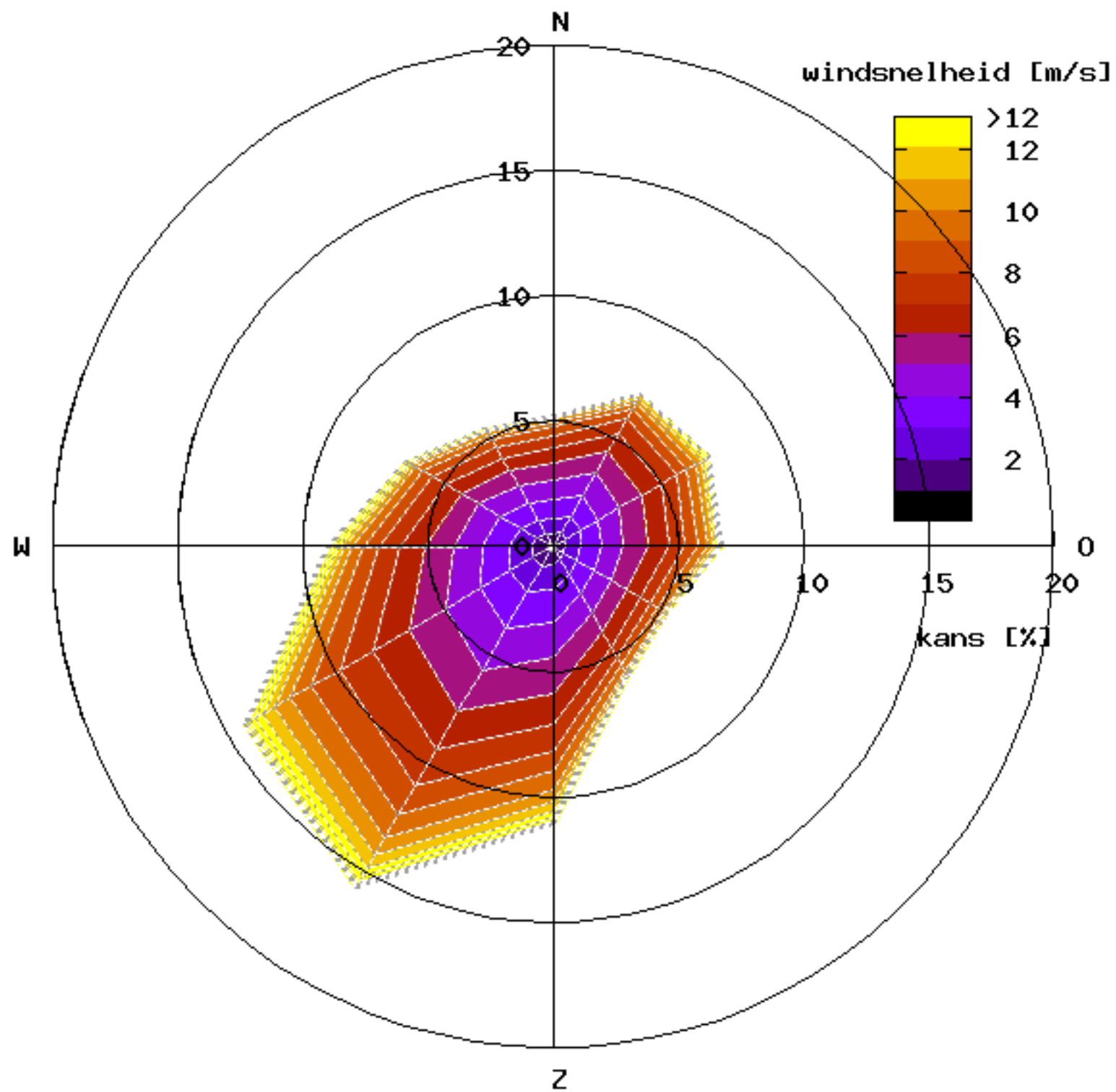


Windroos voor locatie X106929 Y491268.



Distributief overzicht windsnelheden 60 meter op basis van NPR 6097 in uren per jaar										totaal aantal uren: 8766.9	
Positie X106929 Y491268		Jaar 1963-2002								gemiddelde windsnelheid (m/s): 5.9	

wind snelheid	Oost					Zuid			West			Noord
	30°	60°	90°	120°	150°	180°	210°	240°	270°	300°	330°	360°
0.0 - 0.9	12.8	11.3	10.3	11.7	12.6	14.2	19.0	17.7	16.1	14.3	12.0	10.5
1.0 - 1.9	44.2	38.9	36.0	33.5	39.8	50.0	61.9	61.0	56.2	49.2	38.3	35.3
2.0 - 2.9	65.9	59.3	53.2	54.8	62.6	89.5	105.3	93.2	79.9	68.6	55.7	54.7
3.0 - 3.9	84.9	75.3	69.1	65.9	77.4	110.2	140.8	120.5	94.1	82.2	66.3	62.9
4.0 - 4.9	92.9	86.2	79.6	68.2	79.1	119.9	170.3	138.3	102.2	82.5	68.8	68.1
5.0 - 5.9	82.1	90.8	82.7	63.3	74.6	128.9	166.7	149.8	99.6	75.7	62.7	61.3
6.0 - 6.9	74.9	78.1	75.4	54.9	60.1	107.4	156.6	146.7	88.4	63.0	51.0	53.3
7.0 - 7.9	58.8	59.9	57.5	39.7	41.9	93.3	144.3	134.4	74.4	53.2	43.1	43.2
8.0 - 8.9	38.2	43.0	41.4	30.7	29.5	73.5	118.1	114.1	54.8	37.7	31.1	29.1
9.0 - 9.9	25.5	34.8	33.7	21.7	22.2	62.8	93.2	85.5	38.3	28.5	19.1	18.4
10.0 - 10.9	17.3	24.0	23.1	10.3	12.4	42.8	73.1	63.2	29.7	18.6	14.0	10.5
11.0 - 11.9	9.4	14.7	13.7	4.9	8.4	29.8	50.5	49.9	20.6	10.4	6.6	5.4
12.0 - 12.9	5.2	9.8	8.9	2.2	3.8	21.3	35.0	29.4	14.2	6.4	4.0	3.6
13.0 - 13.9	2.5	6.4	6.1	1.0	2.3	12.9	20.3	19.0	9.9	3.0	2.7	2.1
14.0 - 14.9	1.8	3.4	2.5	0.5	0.5	8.6	11.3	10.9	5.6	1.3	1.4	1.1
15.0 - 15.9	0.7	1.1	1.1	0.3	0.4	4.3	5.9	5.6	2.9	1.2	0.6	1.2
16.0 - 16.9	0.1	0.4	0.6	0.2	0.3	2.2	3.0	3.1	1.8	0.3	0.4	0.4
17.0 - 17.9	0.0	0.1	0.3	0.1	0.0	1.1	1.8	2.2	0.8	0.2	0.2	0.1
18.0 - 18.9	0.0	0.1	0.1	0.0	0.0	0.6	0.8	0.9	0.4	0.2	0.0	0.0
19.0 - 19.9	0.0	0.0	0.0	0.0	0.0	0.4	0.3	0.4	0.2	0.1	0.0	0.0
20.0 - 20.9	0.0	0.0	0.0	0.0	0.0	0.3	0.1	0.2	0.1	0.1	0.0	0.0
21.0 - 21.9	0.0	0.0	0.0	0.0	0.0	0.0	0.0	0.2	0.1	0.1	0.0	0.0
22.0 - 22.9	0.0	0.0	0.0	0.0	0.0	0.0	0.0	0.1	0.1	0.0	0.0	0.0
23.0 - 23.9	0.0	0.0	0.0	0.0	0.0	0.0	0.0	0.0	0.0	0.0	0.0	0.0
24.0 - 24.9	0.0	0.0	0.0	0.0	0.0	0.0	0.0	0.0	0.0	0.0	0.0	0.0
25.0 - 25.9	0.0	0.0	0.0	0.0	0.0	0.0	0.0	0.0	0.0	0.0	0.0	0.0
26.0 - 26.9	0.0	0.0	0.0	0.0	0.0	0.0	0.0	0.0	0.0	0.0	0.0	0.0
27.0 - 27.9	0.0	0.0	0.0	0.0	0.0	0.0	0.0	0.0	0.0	0.0	0.0	0.0
28.0 - 28.9	0.0	0.0	0.0	0.0	0.0	0.0	0.0	0.0	0.0	0.0	0.0	0.0
29.0 - 29.9	0.0	0.0	0.0	0.0	0.0	0.0	0.0	0.0	0.0	0.0	0.0	0.0
30.0 - 30.9	0.0	0.0	0.0	0.0	0.0	0.0	0.0	0.0	0.0	0.0	0.0	0.0
31.0 - 31.9	0.0	0.0	0.0	0.0	0.0	0.0	0.0	0.0	0.0	0.0	0.0	0.0
32.0 - 32.9	0.0	0.0	0.0	0.0	0.0	0.0	0.0	0.0	0.0	0.0	0.0	0.0
33.0 - 33.9	0.0	0.0	0.0	0.0	0.0	0.0	0.0	0.0	0.0	0.0	0.0	0.0
34.0 - 34.9	0.0	0.0	0.0	0.0	0.0	0.0	0.0	0.0	0.0	0.0	0.0	0.0
35.0 - 35.9	0.0	0.0	0.0	0.0	0.0	0.0	0.0	0.0	0.0	0.0	0.0	0.0
36.0 - 36.9	0.0	0.0	0.0	0.0	0.0	0.0	0.0	0.0	0.0	0.0	0.0	0.0
37.0 - 37.9	0.0	0.0	0.0	0.0	0.0	0.0	0.0	0.0	0.0	0.0	0.0	0.0
38.0 - 38.9	0.0	0.0	0.0	0.0	0.0	0.0	0.0	0.0	0.0	0.0	0.0	0.0
39.0 - 39.9	0.0	0.0	0.0	0.0	0.0	0.0	0.0	0.0	0.0	0.0	0.0	0.0

aantal uren	617.2	637.6	595.3	463.9	527.9	974.0	1378.3	1246.3	790.4	596.8	478.0	461.2
gemiddelde snelheid	5.4	5.8	5.9	5.2	5.2	6.2	6.5	6.6	5.9	5.4	5.3	5.3

